

ROAD INDEX

A	AQUILLA BLVD. C3	I	I cont	S	SPENCER ST. B3-B4
	AQUILLA RD. A1-B6				STILLWELL RD. F3-G3
	ALDENSHIRE DR. C4		J		
B	BERKSHIRE DR. B3			T	TAYLORWELLS RD. C1-D6
			K		TURNER DR. B3
					F4-G1
C	CHARDON WINDSOR RD. D1-G2			U	
	CLARIDON TROY RD. D1-D6		L		LORING AVE. B3
	CORNELIA DR. B3				
	CLARIDON PARK DR. D-2				
D	DURKEE RD. F6-G6		M		MAYFIELD RD. A4-G4
E	ENSIGN RD. D5-F5		N		
F	FOREST RD. E4-E6		O		OLD STATE RD. E1-G6
G	GOREDON DR. B3		P		
H	HALL RD. C2-D3		Q		
			R		

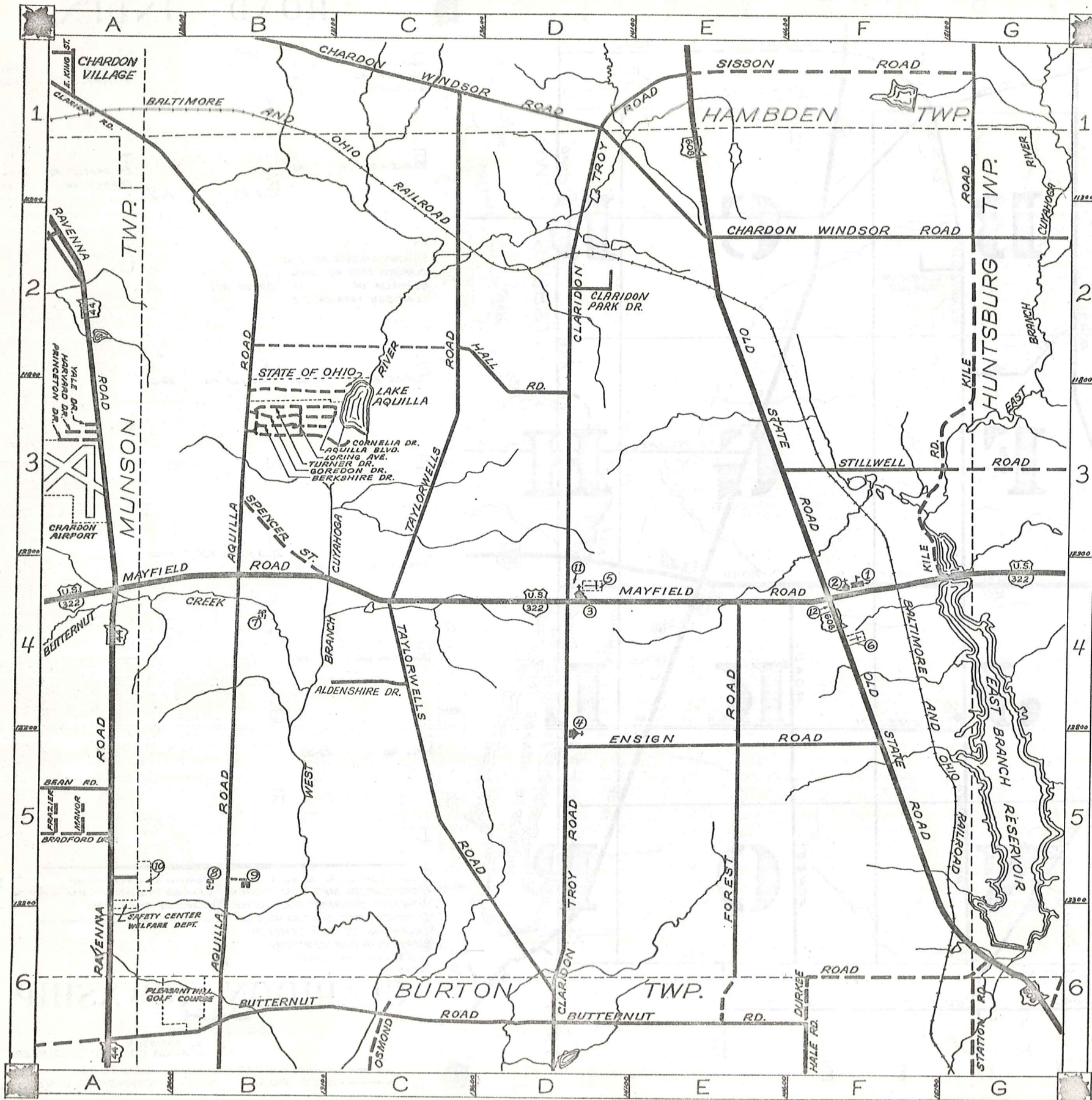
- ① CLARIDON LOCAL SCHOOL
- ② EAST CLARIDON METHODIST CHURCH
- ③ THE FIRST CONGREGATIONAL CHURCH
- ④ CHRISTIAN MISSIONARY ALLIANCE CH.
- ⑤ CLARIDON CENTER CEMETERY
- ⑥ EAST CLARIDON CEMETERY
- ⑦ WEST CLARIDON CEMETERY
- ⑧ CEMETERY
- ⑨ GEauga COUNTY HOME
- ⑩ GEauga COUNTY COMM. HOSPITAL
- ⑪ CLARIDON TOWN HALL
- ⑫ U.S. POST OFFICE (CLARIDON)
- ⑬
- ⑭
- ⑮
- ⑯

CLARIDON TOWNSHIP

SCALE 1"=2000'

OJ ROBINSON
GEAUGA COUNTY ENGINEER

UNPAVED ROAD
PAVED ROAD
RAILROAD
TOWNSHIP LINE



ROAD INDEX

A	AQUILLA BLVD. C3	I con't	S	SPENCER ST. B3-B4
	AQUILLA RD. A1-B6			STILLWELL RD. F3-G3
	ALDENSHIRE DR. C4	J		
B	BERKSHIRE DR. B3	K	T	TAYLORWELLS RD. C1-D4
		KILE RD. F4-G1		TURNER DR. B3
C	CHARDON WINDSOR RD. D1-G2	L	U	
	CLARIDON TROY RD. D1-D6	LORING AVE. B3		
	CORNELIA DR. B3			
	CLARIDON PARK DR. D-2			
D	DURKEE RD. F6-G6	M	V	
		MAYFIELD RD. A4-G4		
E	ENSIGN RD. D5-F5	N	W	
F	FOREST RD. E4-E6	O	X	
		OLD STATE RD. E1-G6		
G	GOREDON DR. B3	P	Y	
		Q	Z	
H	HALL RD. C2-D3	R		

- ① CLARIDON LOCAL SCHOOL
- ② EAST CLARIDON METHODIST CHURCH
- ③ THE FIRST CONGREGATIONAL CHURCH
- ④ CHRISTIAN MISSIONARY ALLIANCE CH.
- ⑤ CLARIDON CENTER CEMETERY
- ⑥ EAST CLARIDON CEMETERY
- ⑦ WEST CLARIDON CEMETERY
- ⑧ CEMETERY
- ⑨ GEauga COUNTY HOME
- ⑩ GEauga COUNTY COMM. HOSPITAL
- ⑪ CLARIDON TOWN HALL
- ⑫ U.S. POST OFFICE (CLARIDON)

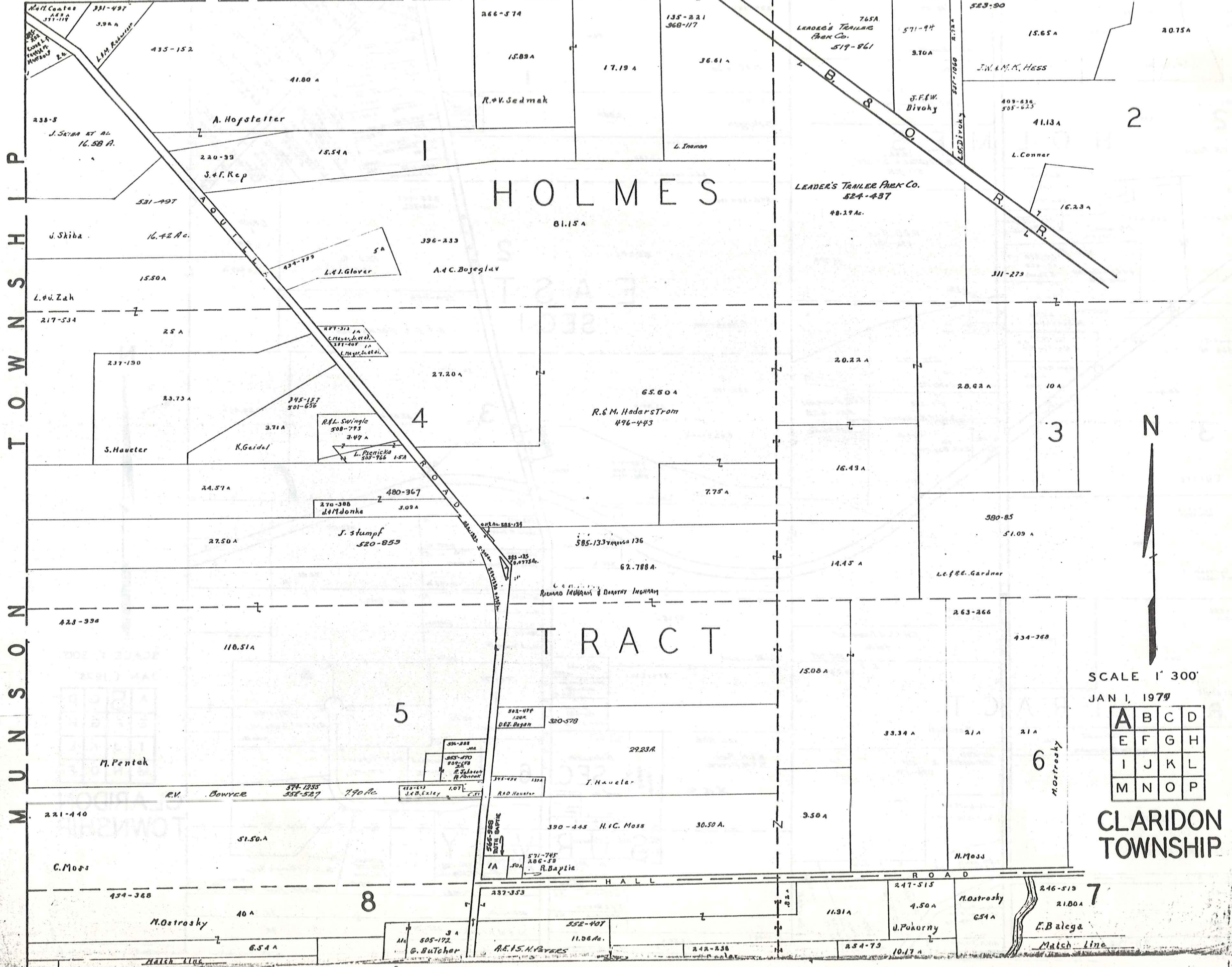
CLARIDON TOWNSHIP

SCALE = 1" = 2000'

O.J. ROBINSON
GEAUGA COUNTY ENGINEER

--- UNPAVED ROAD
 ——— PAVED ROAD
 ——— RAILROAD
 - - - TOWNSHIP LINE

H A M B U R G T O W N S H I P

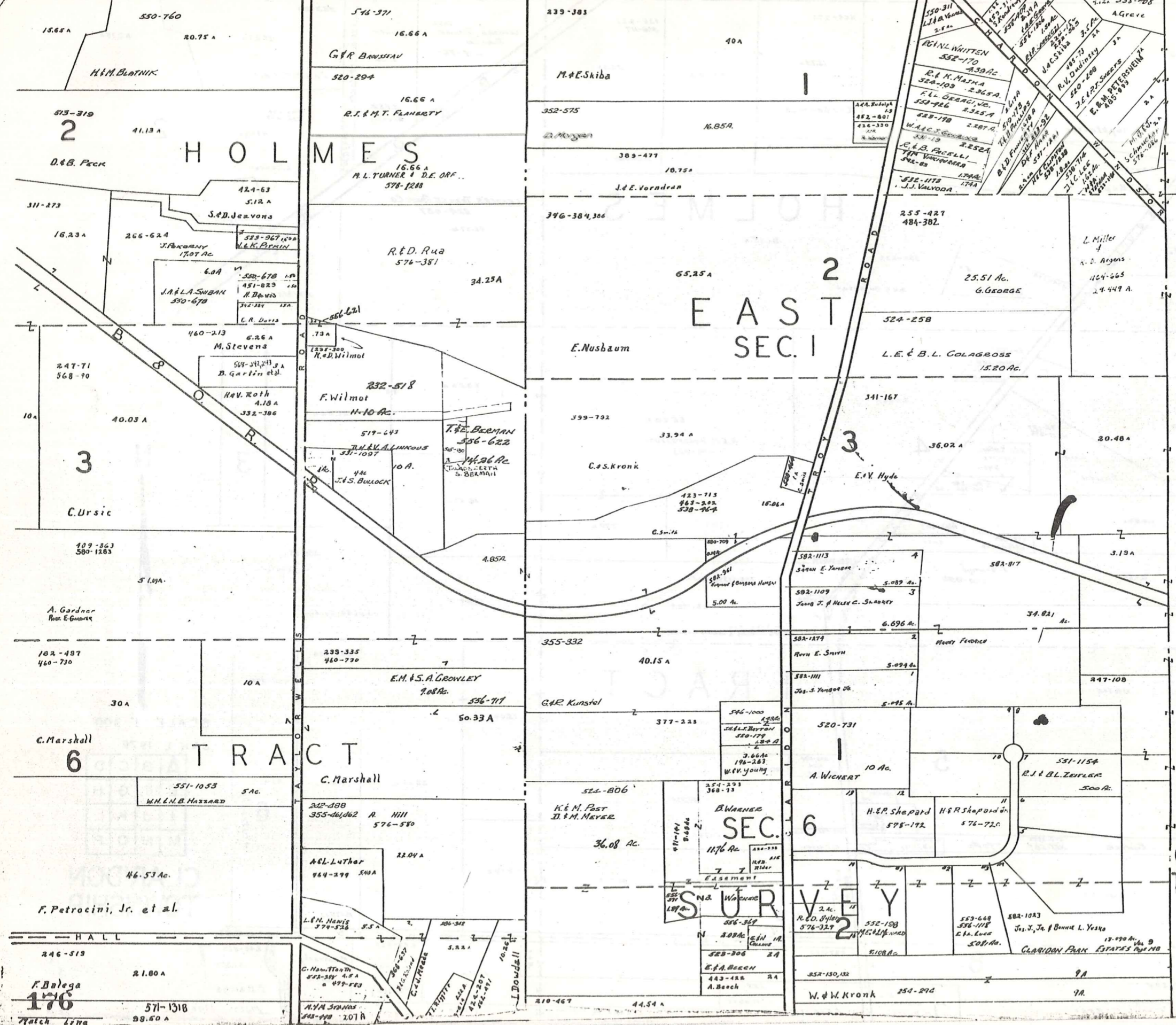


SCALE 1" = 300'
JAN 1, 1979

A	B	C	D
E	F	G	H
I	J	K	L
M	N	O	P

CLARIDON TOWNSHIP

H A M B U R G T O W N S H I P



SCALE 1" = 300'
JAN 1, 1975

A	B	C	D
E	F	G	H
I	J	K	L
M	N	O	P

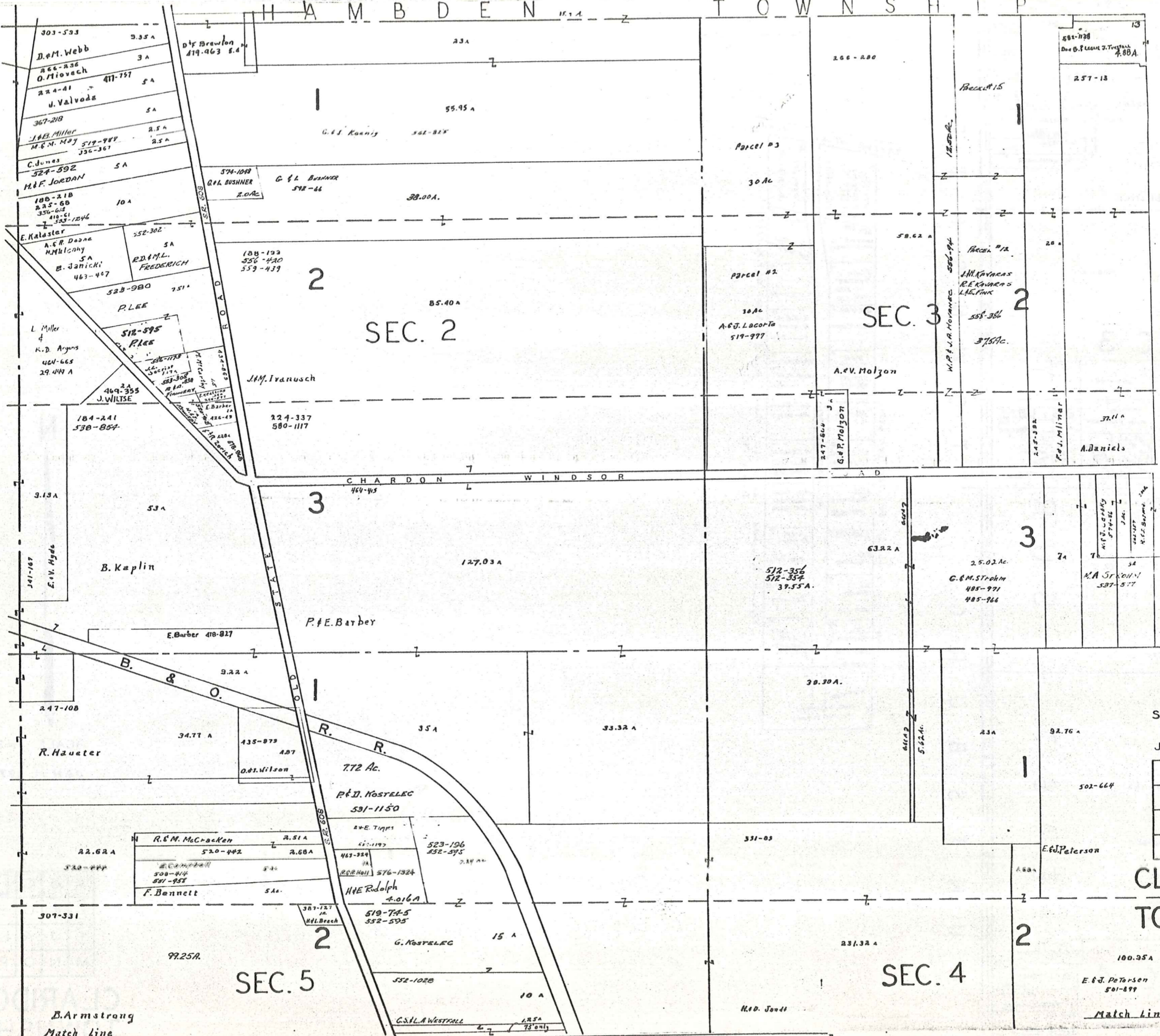
CLARIDON TOWNSHIP

SEC. 6
SURVEY

F. Bulega
176

Match 175a

H A M B D E N T O W N S H I P



SCALE 1" = 300'

JAN 1, 1976

A	B	C	D
E	F	G	H
I	J	K	L
M	N	O	P

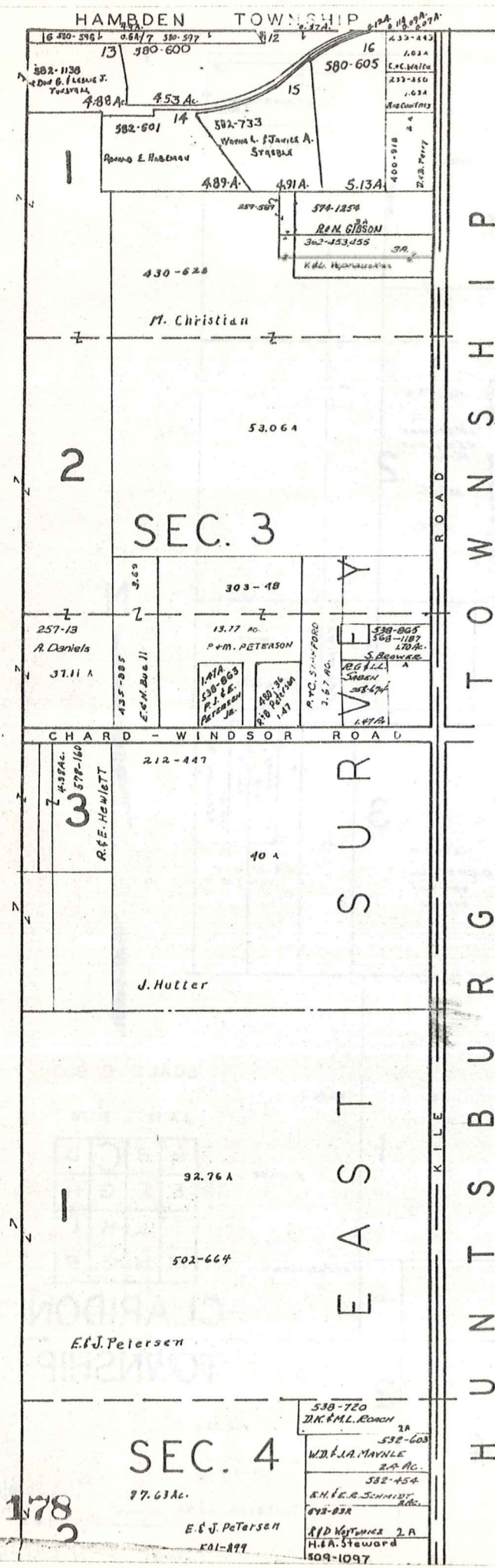
CLARIDON TOWNSHIP

100.35 A

E. J. Petersen 501-899

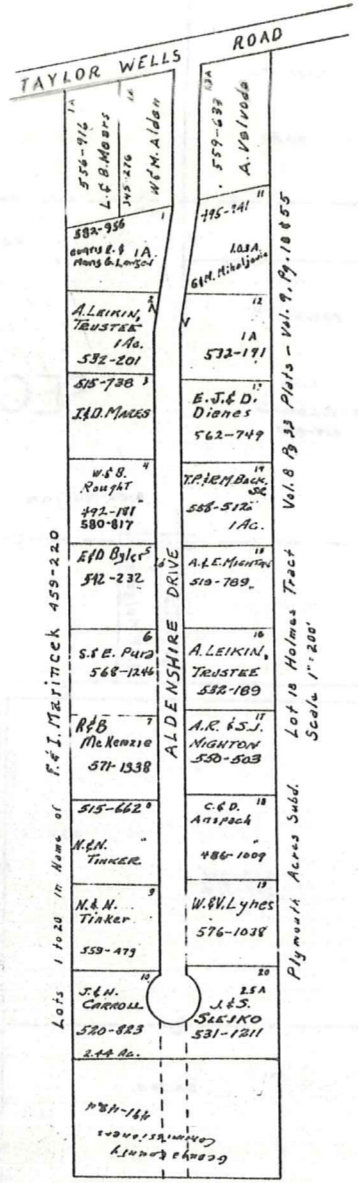
Match Line

Handwritten signature



T O W N S H I P

H U N T S B U R G



Lots 1 to 20 in Name of F.E.I. Martineck 459-220

Plymouth Access Subd. Lot 18 Holmes Tract Vol. 8 B 33 Plats - Vol. 9, Pp. 18 & 55 Scale 1"=200'



SCALE 1"=300'

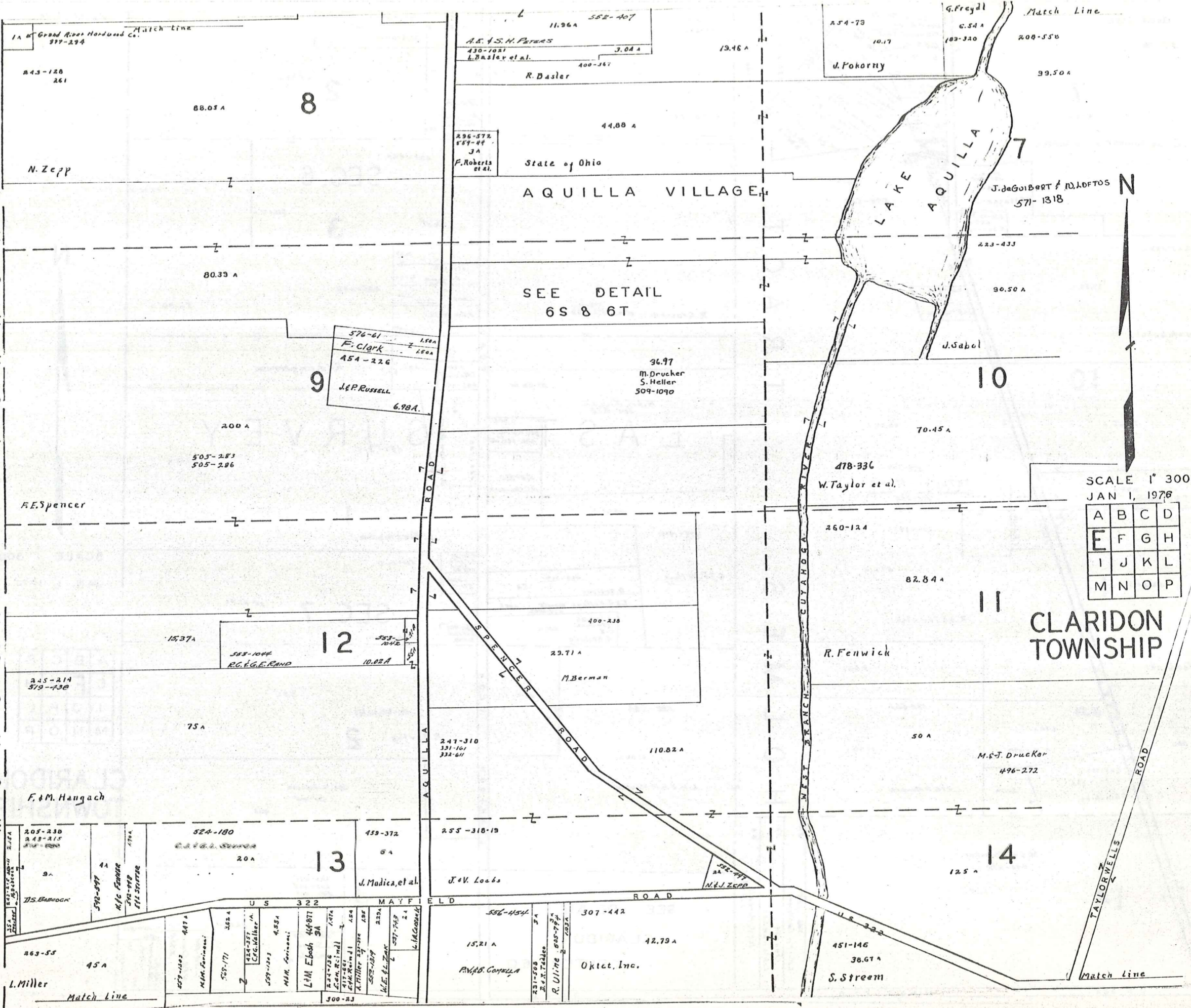
JAN 1, 1976

A	B	C	D
E	F	G	H
I	J	K	L
M	N	O	P

CLARIDON
TOWNSHIP

178
2

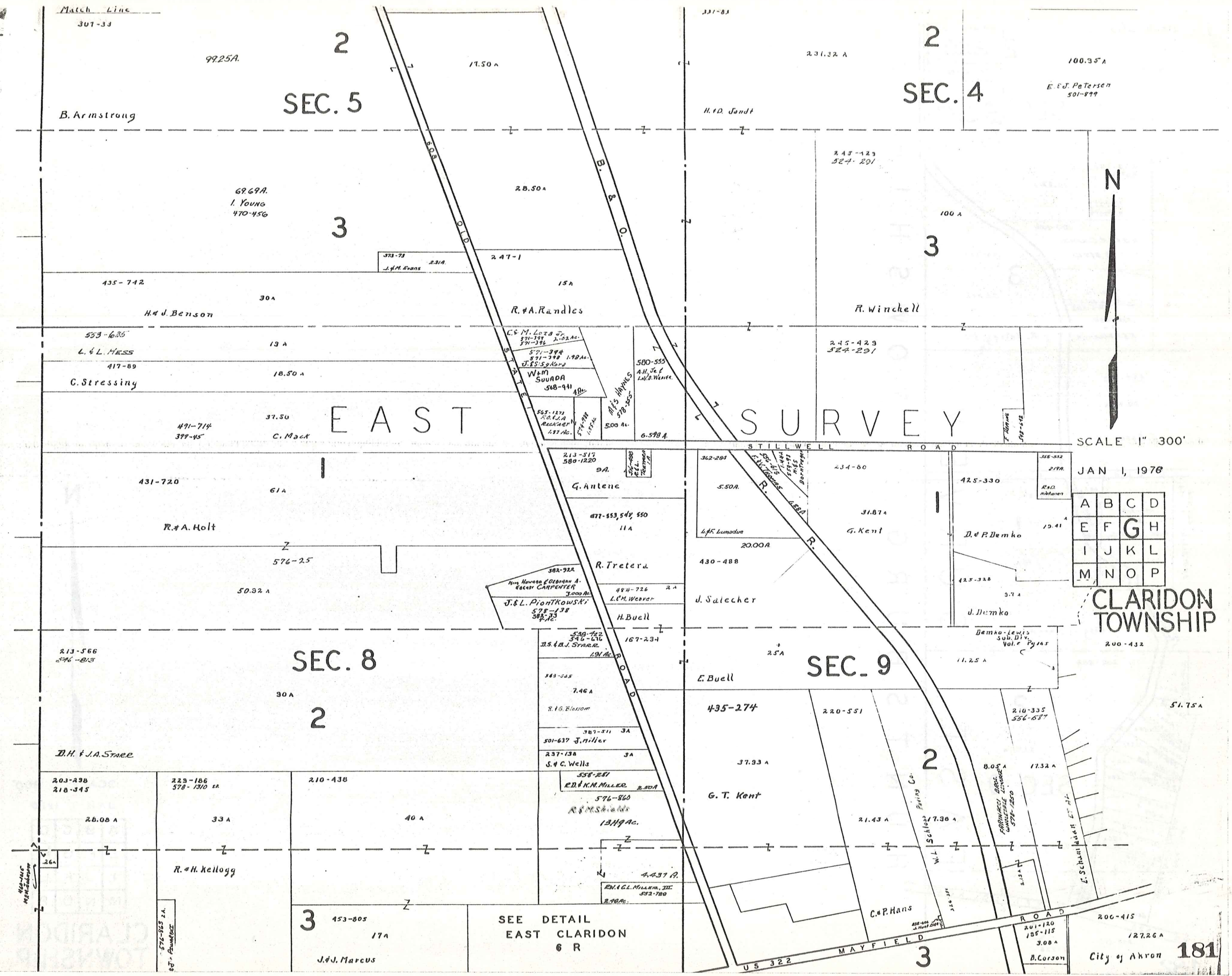
M
U
N
I
C
I
P
A
L
T
O
W
N
S
H
I
P



SCALE 1" = 300'
JAN 1, 1976

A	B	C	D
E	F	G	H
I	J	K	L
M	N	O	P

CLARIDON TOWNSHIP



JAN 1, 1976

A	B	C	D
E	F	G	H
I	J	K	L
M	N	O	P

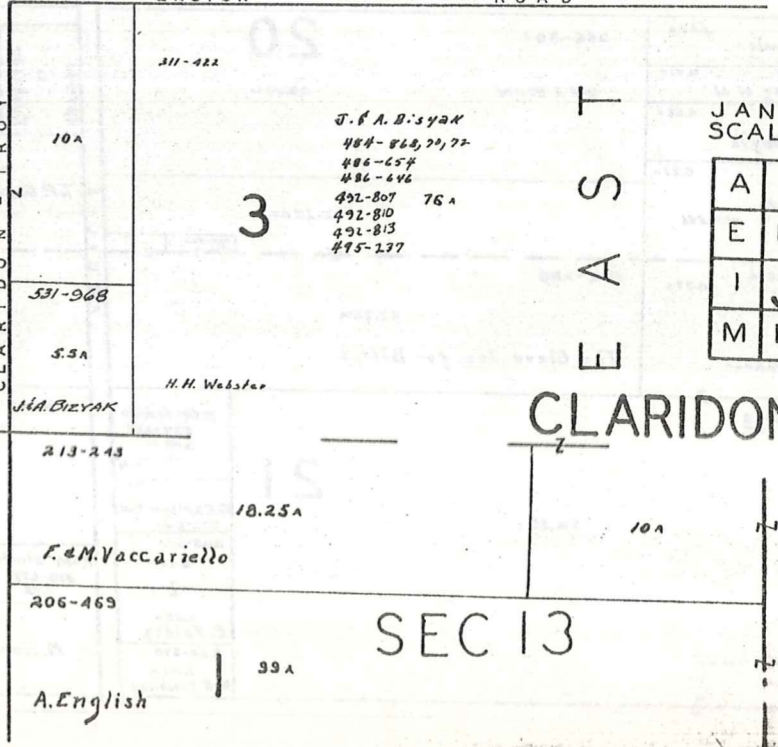
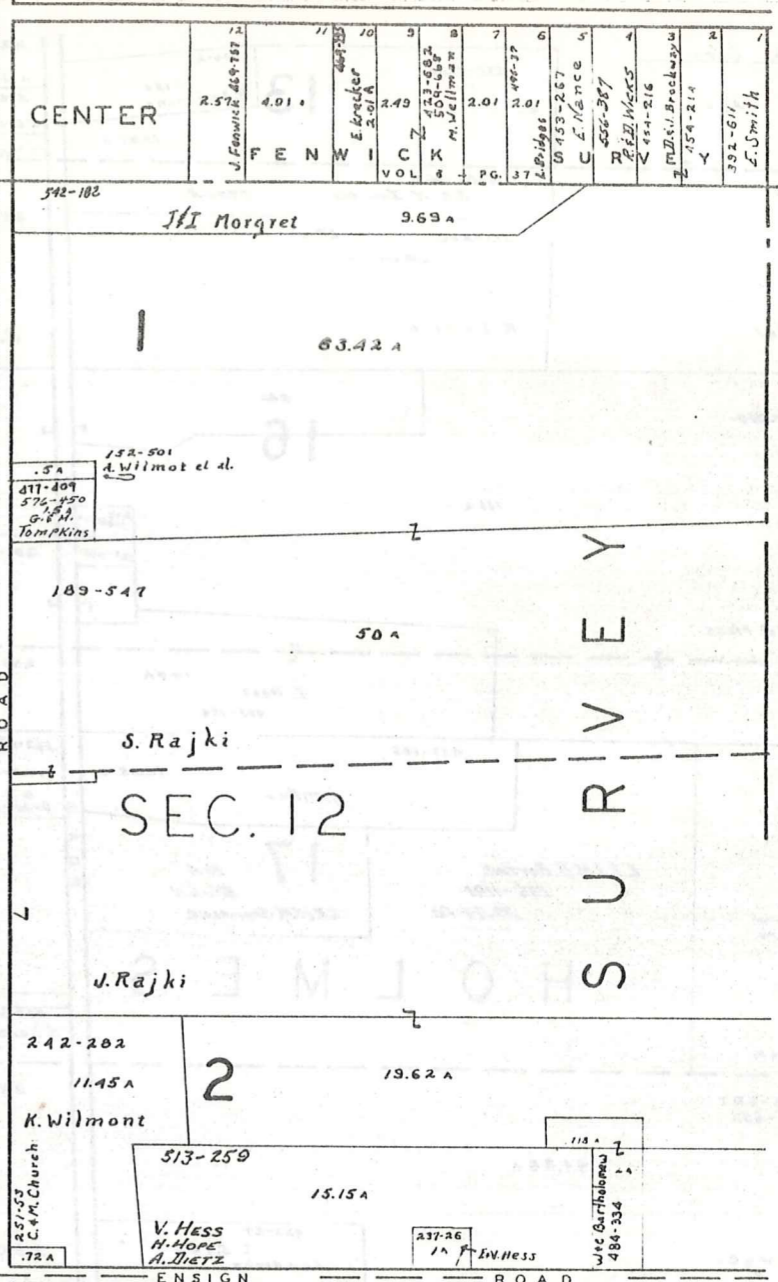
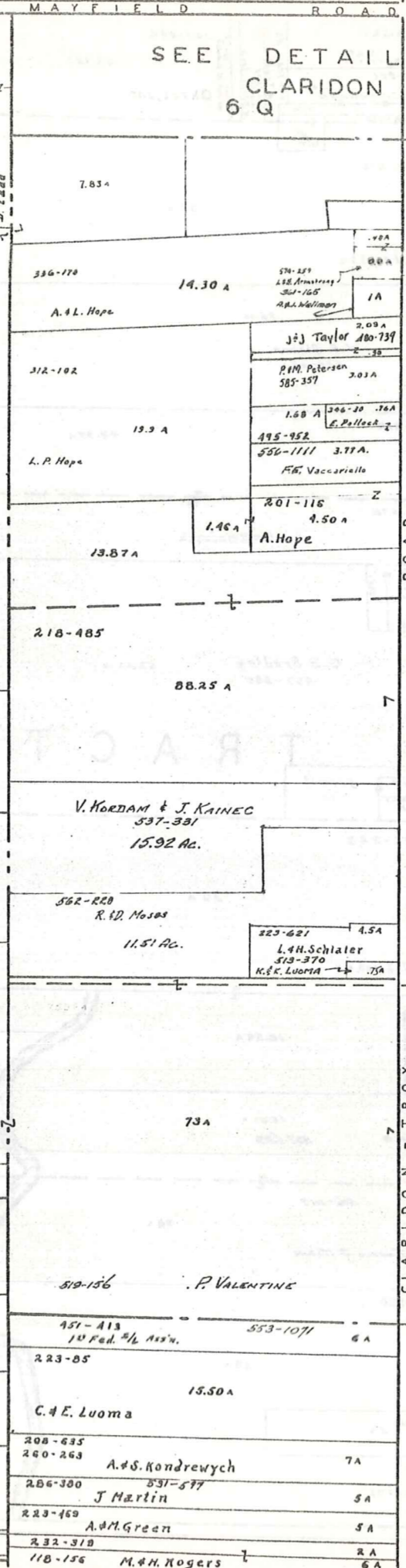
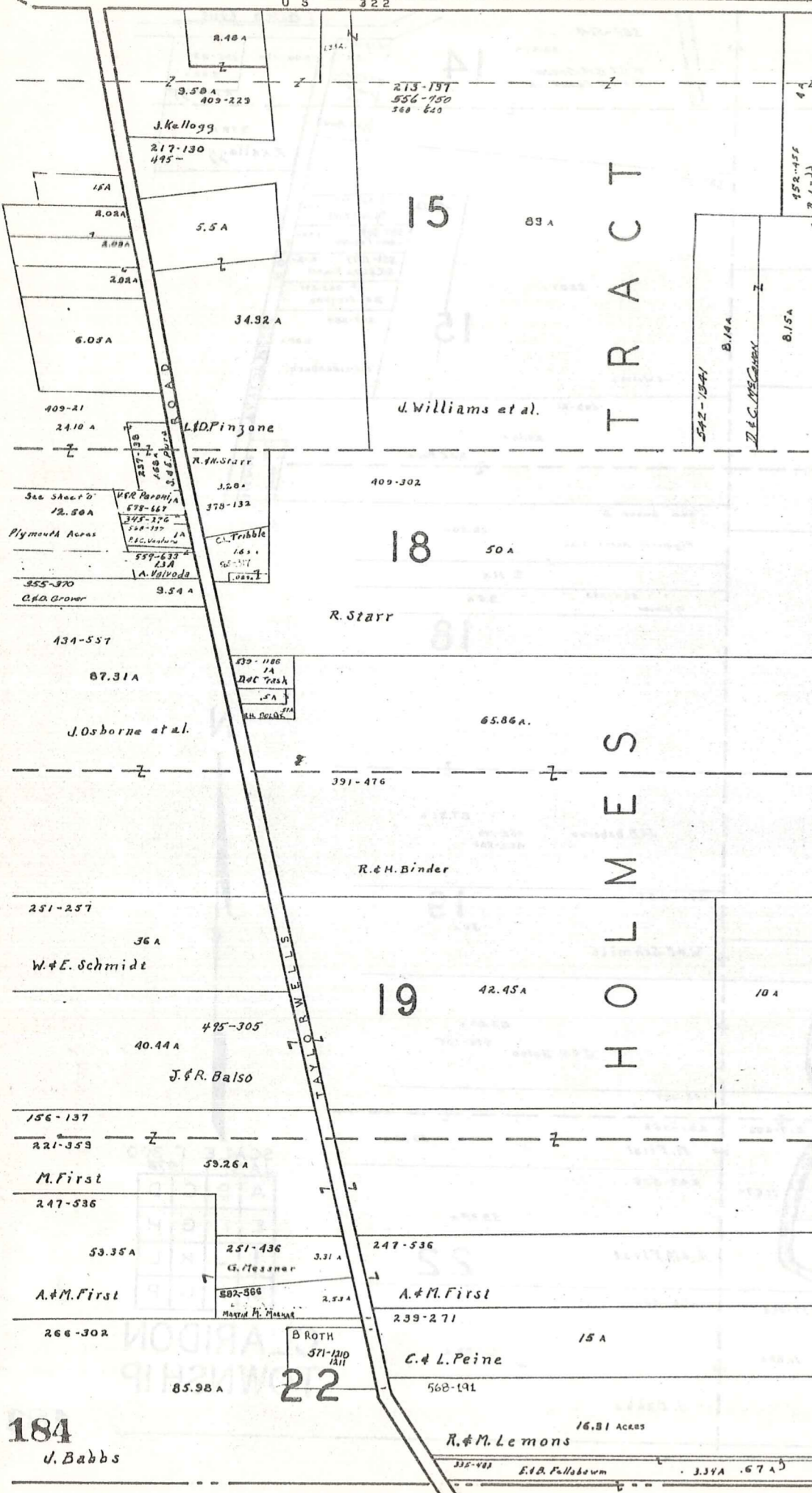
CLARIDON TOWNSHIP

SEE DETAIL
EAST CLARIDON
6 R

12	11	10	9	8	7	6	5	4	3	2	1
2.572	4.01	2.49	2.01	2.01	2.01	2.01	2.01	2.01	2.01	2.01	2.01
J. Fenwick	FENWICK	E. Brecker	M. J. Williams	C. H. Hance	C. H. Hance	C. H. Hance	C. H. Hance	C. H. Hance	C. H. Hance	C. H. Hance	C. H. Hance

SEE DETAIL CLARIDON 6 Q

CENTER

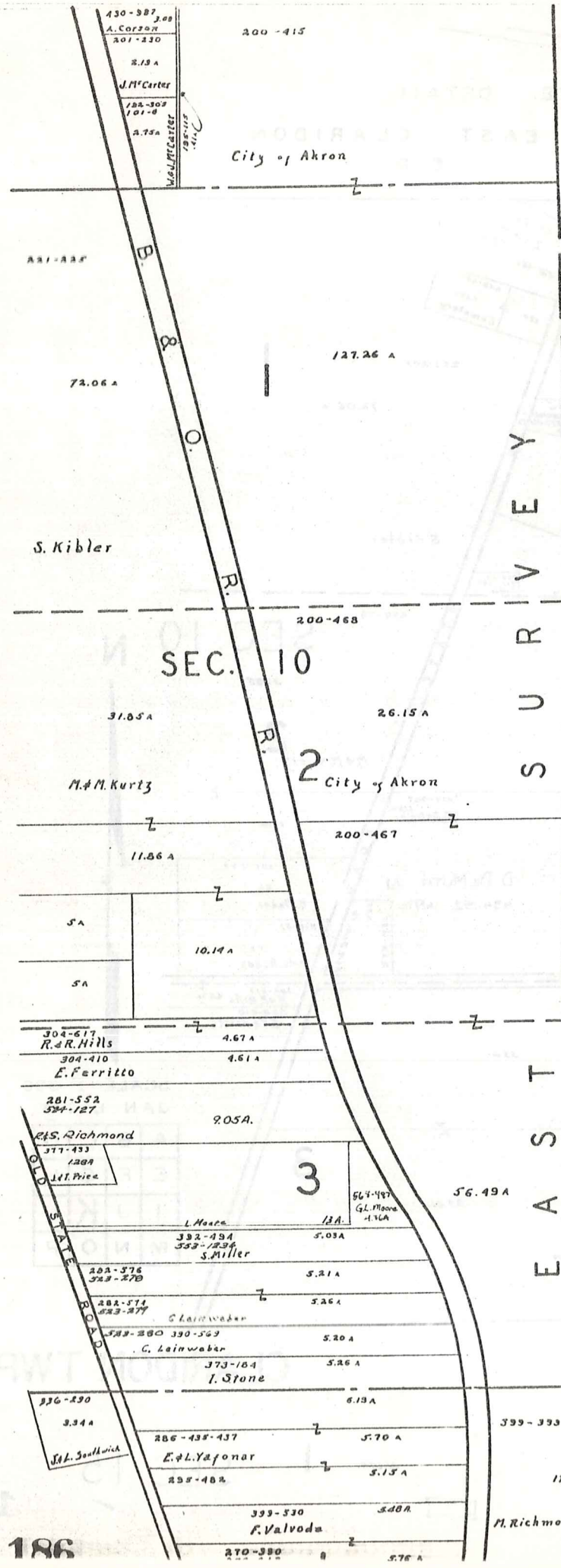


JAN 1 1976
SCALE 1" = 300'

A	B	C	D
E	F	G	H
I	J	K	L
M	N	O	P

CLARIDON TWP.

184 U. Babbs



SEC. 10

City of Akron

S U R V E Y
T O W N S H I P
E A S T
H U N T S B U R G



SCALE 1" = 300'
JAN 1, 1970

A	B	C	D
E	F	G	H
I	J	K	L
M	N	O	P

CLARIDON TWP.

P
H
S
N
W
T
O
N
S
O
N
M
U
N

813-548

58.39 A

21

892-355
2.6 A
S. Carlson et al.
531-120
2.05 A
K.W. FELDZ
531-120
2.05 A
K. Feldz et al.
834-370
2.05 A
M.R. Enochian

491-760
200-470

T. E. Schenke
10.04 Ac.

99 A

251-603
W. S. Zornes

M. Hopkins

W & C Miller
119-190 2.5

531-803
P. MONTAGUE
J. ROGERS
L. BRIDGEMAN

430-147
L. M. C. Miquade et al.

469-1014

247-536

53.35 A

22

A. & M. First

582-1015

11.83 A

MICHAEL F. & VICTORIA MUMFORD

85.98 A

36 A
578-120
443-232
512-273
3.89 A

A. Berlin

575-958
3.90 A
M. Gum
S. Malovic

8.85 A

George Hosp. Assn. Inc.
469-955
104

326-93

443-90

56 A

Geauga Hospital Ass'n

B
U
E
L

T
R
A
C
T

469-1014

ROAD

W
I
L
C
O
X
&

17.5

67.98 A

M. & V. MURPHY

523-990

5

S
M
I
T
H

T
R
A
C
T

100.70 A

Jewish Comm. Center

Geauga County Inf.

36-136

J. Dinsmore 480-46

76 Ac.

551-507
0.71 A
W. S. Murphy et al.
168
11-93A
531-570
531-322

S. T. KHOUSS
509-1029
4.00 Ac.

4

454-954

67 A

The Pleasant Hill Golf Course, Inc.

30 A

70.36 A

2

A
L
D
E
R
M
A
N

46.38 A

15.62 A

N

P
O
N
D



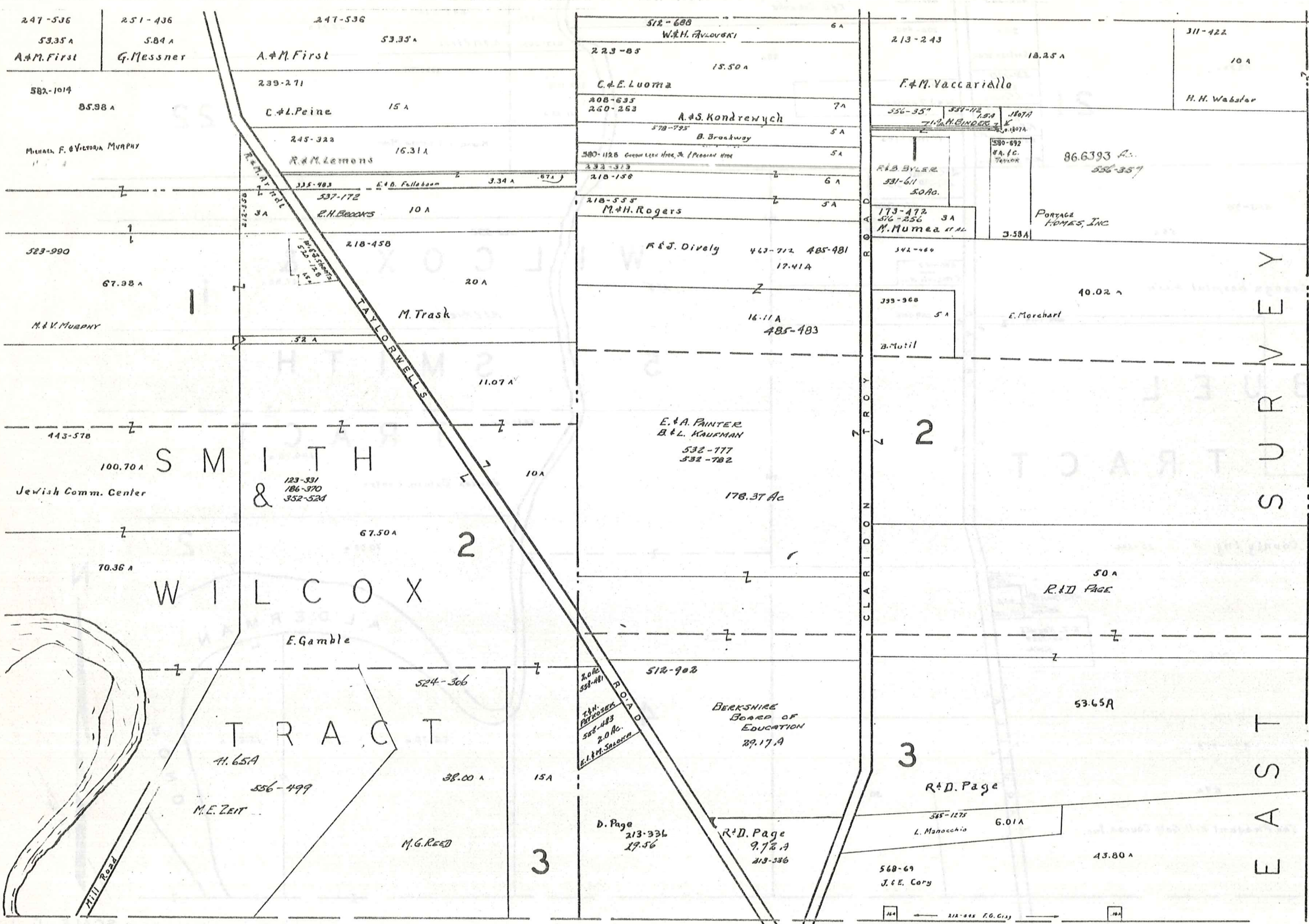
B
U
R
T
O
N

T
O
W
N
S
H
I
P

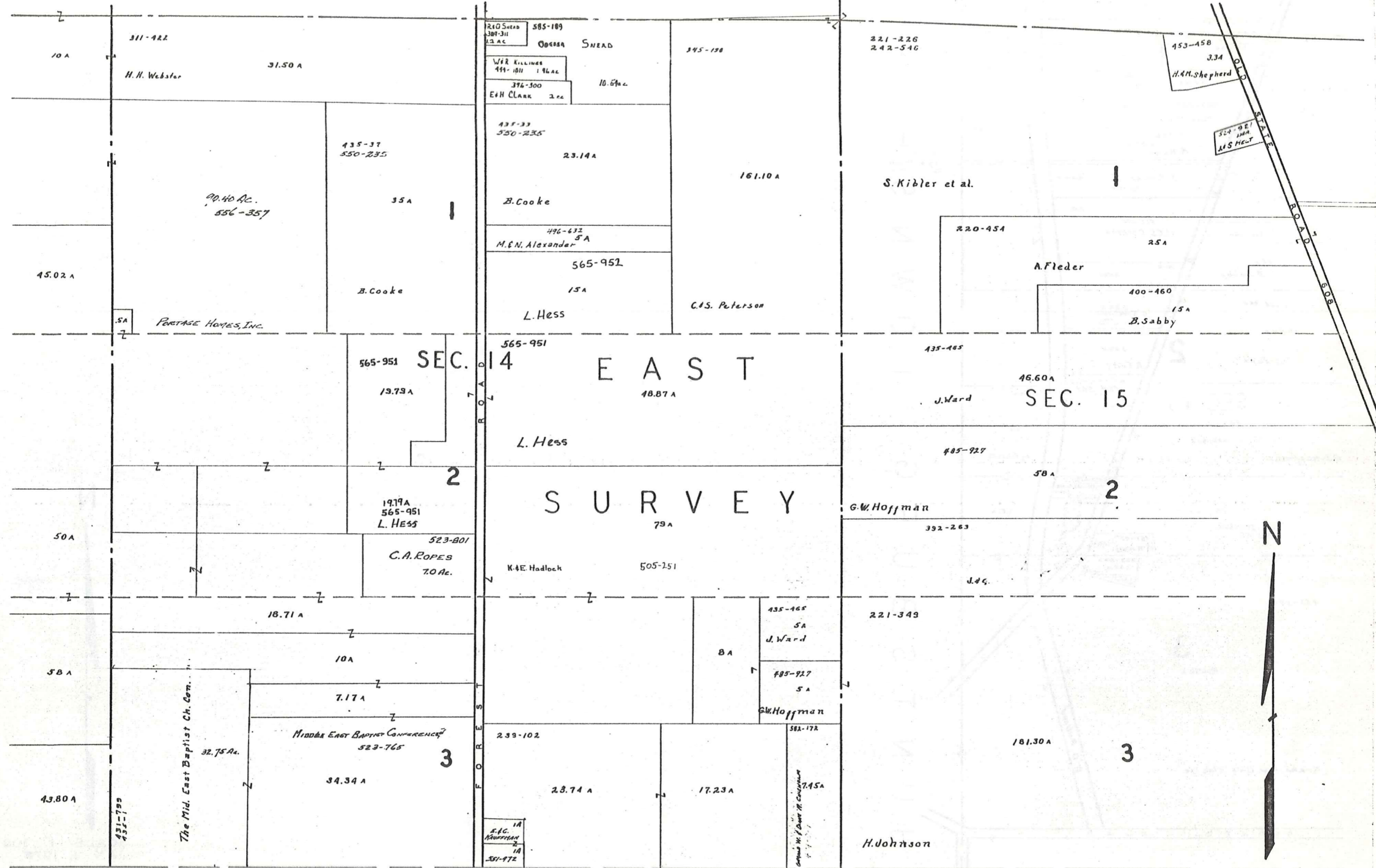
SCALE 1" = 300'
JAN 1, 1978

A	B	C	D
E	F	G	H
I	J	K	L
M	N	O	P

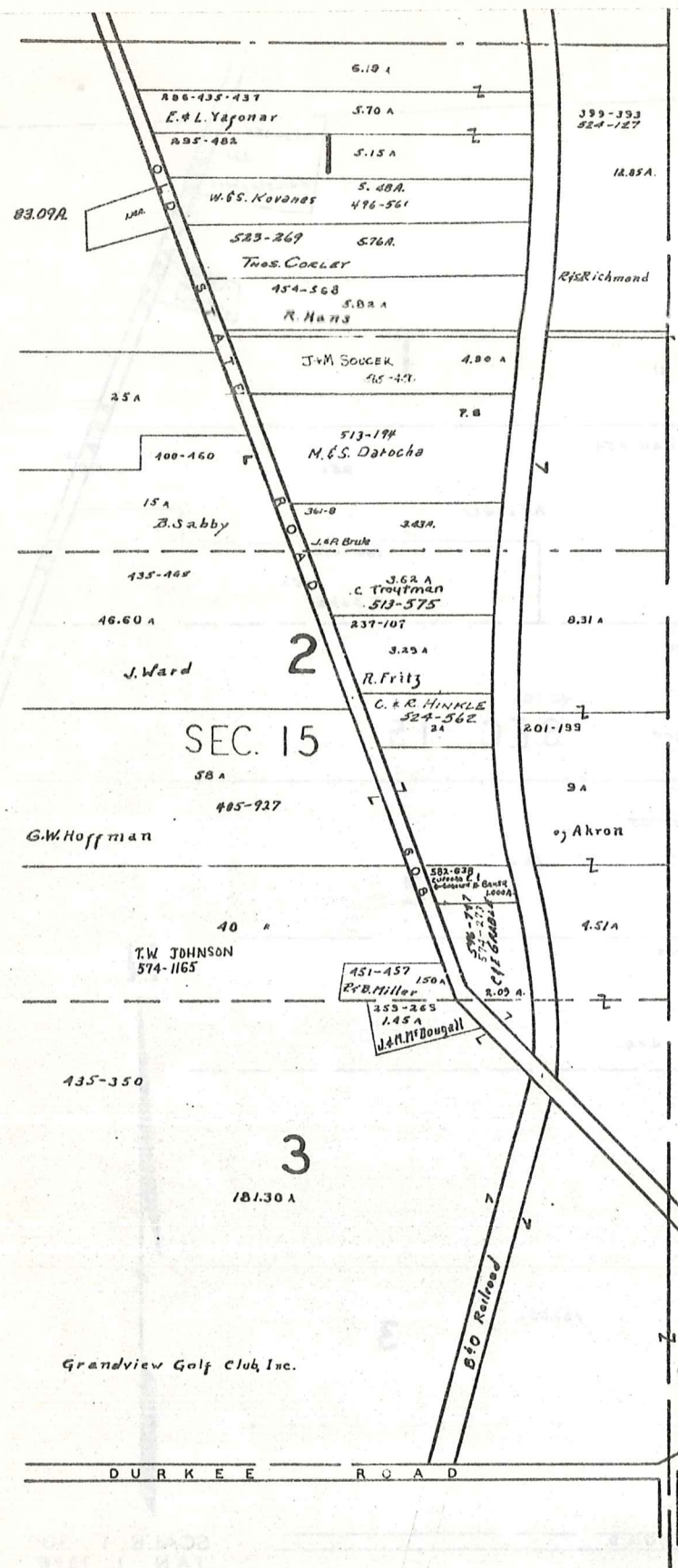
187
CLARIDON TWP.



A	B	C	D
E	F	G	H
I	J	K	L
M	N	O	P



A	B	C	D
E	F	G	H
I	J	K	L
M	N	O	P



HUNTSBURG TOWNSHIP.

BURTON TWP.



SCALE 1" = 300'
JAN 1, 1978

A	B	C	D
E	F	G	H
I	J	K	L
M	N	O	P

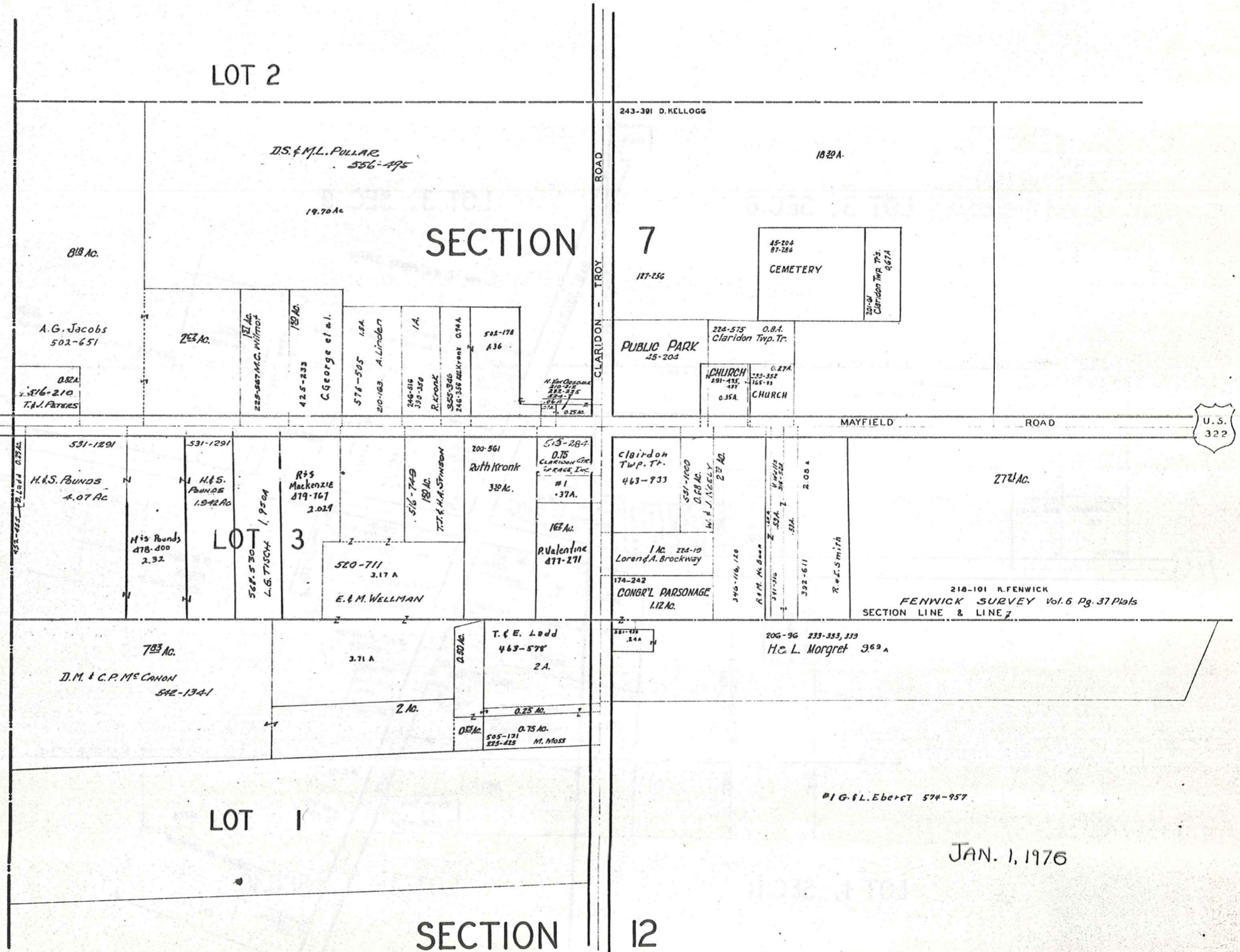
CLARIDON TWP.

CLARIDON T.P. [CENTER]



SCALE 1IN.=2.5CH.=165FT.

JAN 1, 1974

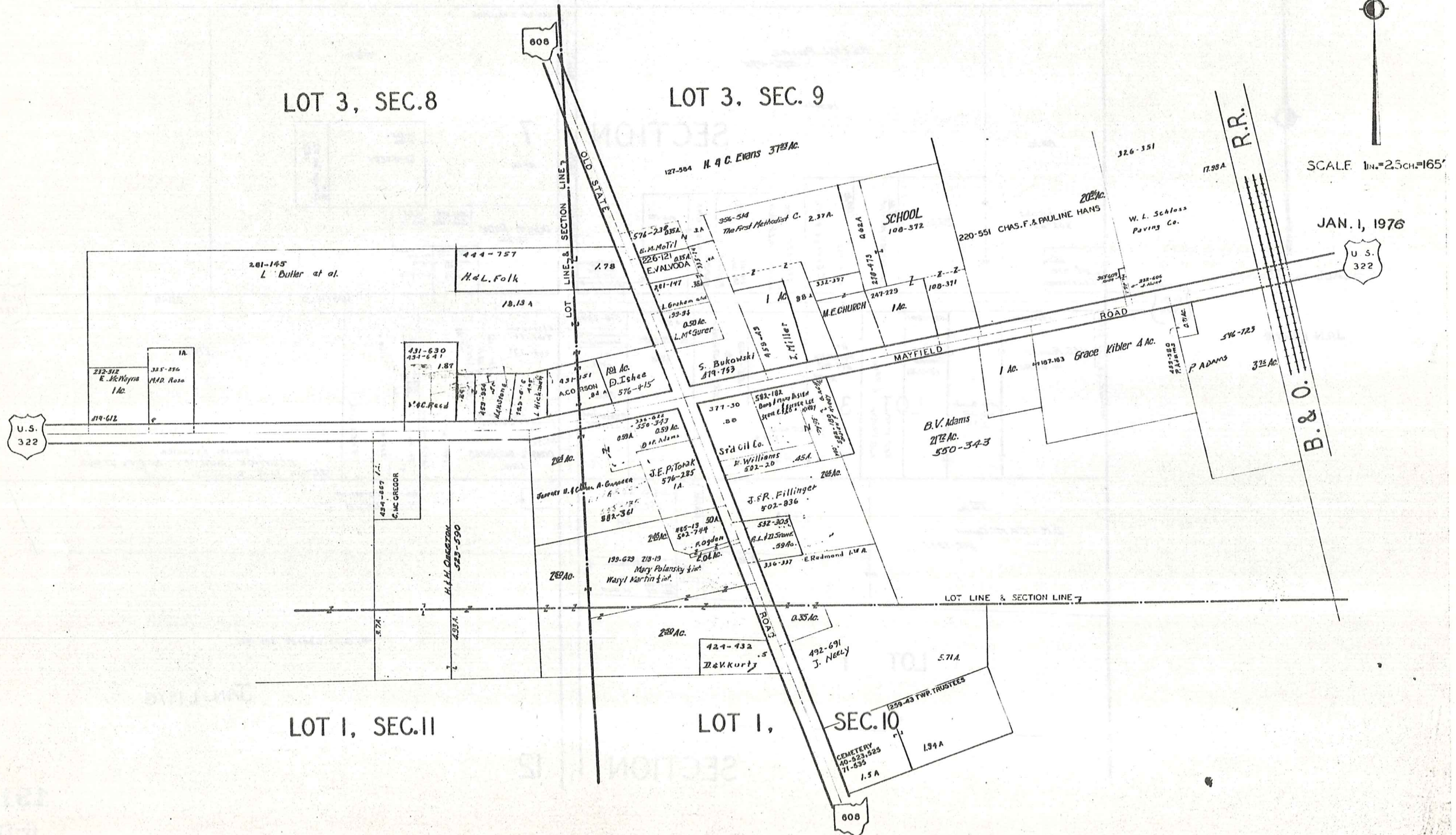


JAN. 1, 1976

EAST CLARIDON
AND VICINITY

CLARIDON TP.

EAST CLARIDON
AND VICINITY

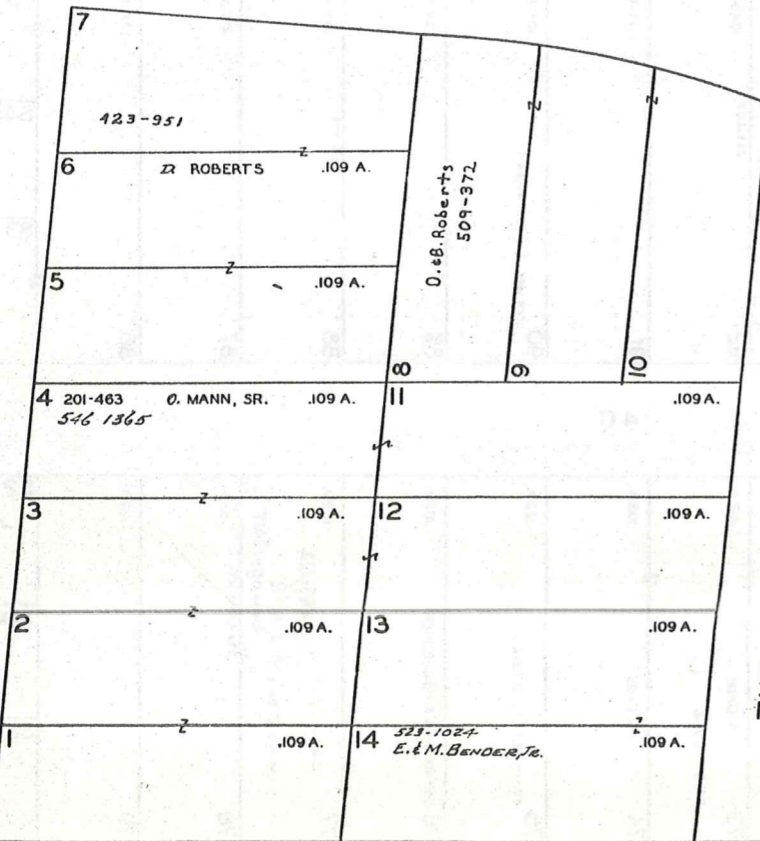


SCALE 1"=30 FT.



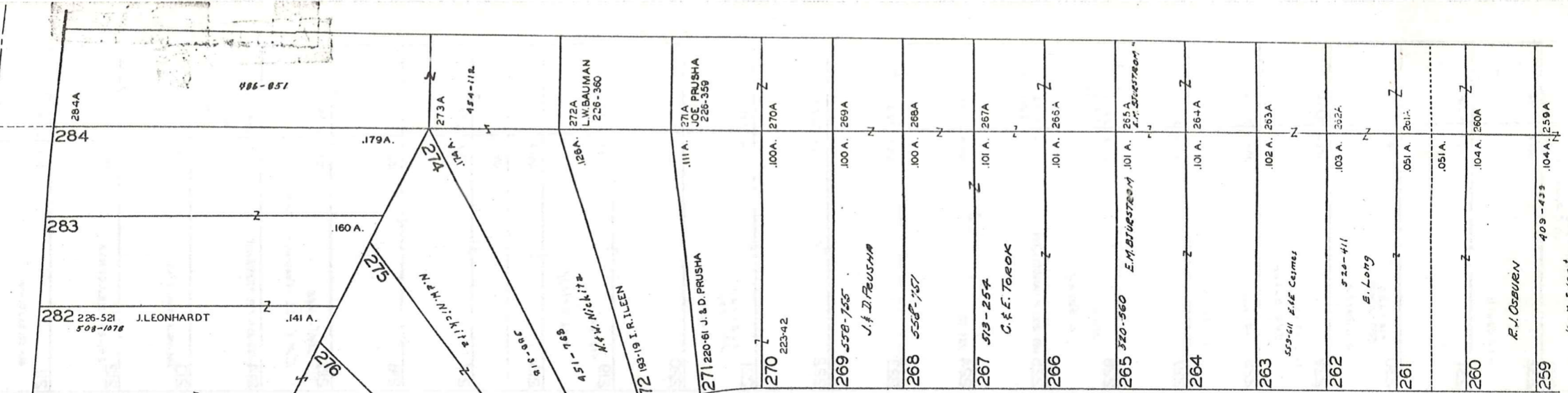
AQUILLA ROAD

60'



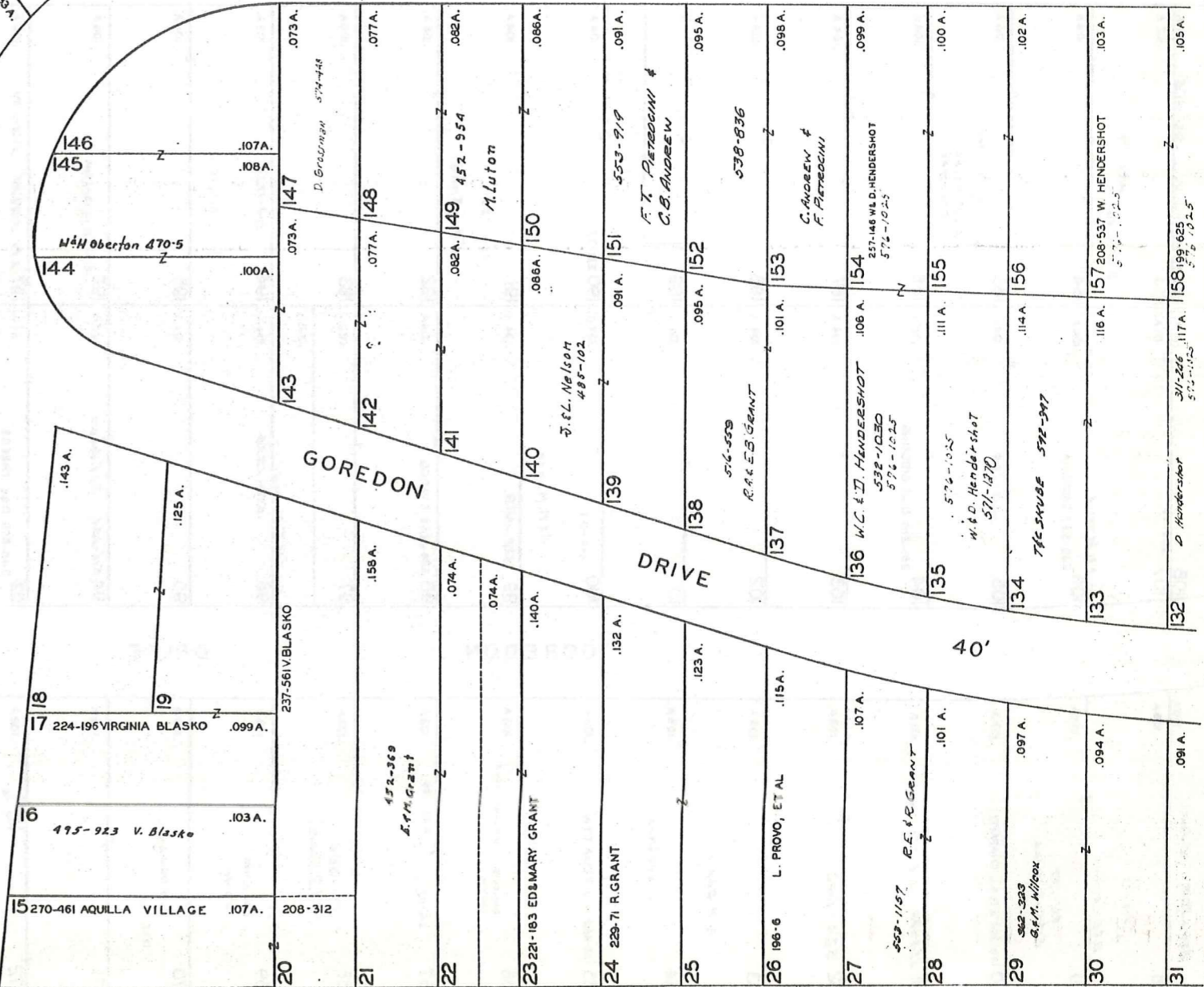
TURNER DRIVE

40'



TURNER DRIVE

40'



GOREDON DRIVE

40'

LAKE AQUILLA SUBDIVISION NO. 1 & LAKE AQUILLA SUBDIVISION NO. 1 ADDITION VOL. 1 PGS 503, 51 REC OF PLATS VOL. 4 PGS 23 & 24 REC OF PLATS

NOW

AQUILLA VILLAGE VOL. 4 PAGES 26-27 REC. OF PLATS

JAN. 1, 1970

193 6-S WEST

SEE 6-S-CTR.

259		.104 A. 259 A
258	409-438 K.M. Sweet	.104 A. 258 A
257	425-75 A. GILSON	.105 A. 257 A
256	G. Davis 425-536	.105 A. 256 A
255		.105 A. 255 A
254	232-410 E.J. DILDA	.105 A. 254 A
253	377-416 B.F.C. WINGREY	.106 A. 253 A
252		.106 A. 252 A
251		.107 A. 251 A
250	O.F.C. Richardson 316-96	.107 A. 250 A
249	224-486	.108 A. 249 A 30-552 S.F.C. RAY
248	W. & E. KAIL	.108 A. 248 A 226-348
247	383-80	.108 A. 247 A
246	1111 Bondi 315-550	.109 A. 246 A
245		.109 A. 245 A
244	G.M. Wiley 571-304	.110 A. 244 A
243	443-443 G. Davis	.110 A. 243 A
242		.110 A. 242 A
241	258-574 J.P.S.A. KING	.110 A. 241 A
240	F. SIEGEL	.111 A. 240 A
239	346-137 343-110	.111 A. 239 A
238	F. SIEGEL	.111 A. 238 A
237	257-381 & B. DAY	.108 A. 237 A
236		.108 A. 236 A
235	F. M. MANCE 573-10	.107 A. 235 A
234	578-826 W. R. Armstrong	.107 A. 234 A

TURNER DRIVE 40'

158	576-1025 A. Hendershot	.105 A.
159	208-445 F. & B. WEEKS	.106 A.
160	201-458 B. WEEKS	.108 A.
161A	220-366 B. A. WEEKS	.109 A.
161B		.094A
162	239-210 1012A Z 550-856	.108 A.
163	G. HENRY 508-639	.108 A.
164	J.F.D. SWANN	.105 A.
165	229-444 F. & M. STRONG 578-966	.104 A.
166		.102 A.
167	369-134	.101 A.
168	A. & V. WILSON 229-491 R. & I. JONES	.099 A.
169	R. J. Lewis 464-868	.098 A.
170		.097 A.
171	BEHNT WEBBER 325-142	.095 A.
172	550-1150 R. & L. R. WILLIAMS	.095 A.
173	217-239 R. H. & M. E. THOMPSON	.083 A.
174	232-538 C. R. Dougherty	.091 A.
175	516-904 M. & M. VORZY	.090 A.
176	263-48 M. & M. RICHARD	.096 A.
177	M. E. & M. S. BUEBOW 558-271	.086 A.
178	562-755	.086 A.
179	M. B. BUSLER 572-805	.083 A.
180		.096 A.
181	444-166 A. Gates	.098 A.
182		.098 A.
183		.098 A.
184		.098 A.
185		.098 A.
186		.098 A.
187		.098 A.
188		.098 A.
189		.098 A.
190		.098 A.
191		.098 A.
192		.098 A.
193		.098 A.
194		.098 A.
195		.098 A.
196		.098 A.
197		.098 A.
198		.098 A.
199		.098 A.
200		.098 A.
201		.098 A.
202		.098 A.
203		.098 A.
204		.098 A.
205		.098 A.
206		.098 A.
207		.098 A.
208		.098 A.
209		.098 A.
210		.098 A.
211		.098 A.
212		.098 A.
213		.098 A.
214		.098 A.
215		.098 A.
216		.098 A.
217		.098 A.
218		.098 A.
219		.098 A.
220		.098 A.
221		.098 A.
222		.098 A.
223		.098 A.
224		.098 A.
225		.098 A.
226		.098 A.
227		.098 A.
228		.098 A.
229		.098 A.
230		.098 A.
231		.098 A.
232		.098 A.
233		.098 A.
234		.098 A.
235		.098 A.
236		.098 A.
237		.098 A.
238		.098 A.
239		.098 A.
240		.098 A.
241		.098 A.
242		.098 A.
243		.098 A.
244		.098 A.
245		.098 A.
246		.098 A.
247		.098 A.
248		.098 A.
249		.098 A.
250		.098 A.
251		.098 A.
252		.098 A.
253		.098 A.
254		.098 A.
255		.098 A.
256		.098 A.
257		.098 A.
258		.098 A.
259		.098 A.
260		.098 A.
261		.098 A.
262		.098 A.
263		.098 A.
264		.098 A.
265		.098 A.
266		.098 A.
267		.098 A.
268		.098 A.
269		.098 A.
270		.098 A.
271		.098 A.
272		.098 A.
273		.098 A.
274		.098 A.
275		.098 A.
276		.098 A.
277		.098 A.
278		.098 A.
279		.098 A.
280		.098 A.
281		.098 A.
282		.098 A.
283		.098 A.
284		.098 A.
285		.098 A.
286		.098 A.
287		.098 A.
288		.098 A.
289		.098 A.
290		.098 A.
291		.098 A.
292		.098 A.
293		.098 A.
294		.098 A.
295		.098 A.
296		.098 A.
297		.098 A.
298		.098 A.
299		.098 A.
300		.098 A.

GOREDON DRIVE 40'

132	576-1025 A. Hendershot	.105 A.
131	579-292 576-1025 224-503 B. WEEKS	.106 A.
130	114 A. 160 201-458 B. WEEKS	.108 A.
129	111 A. 161A 220-366 B. A. WEEKS	.109 A.
128B	109 A. 161B	.094A
128A	107 A. 162 239-210 1012A Z 550-856	.108 A.
127	105 A. 163 G. HENRY 508-639	.108 A.
126	104 A. 164 J.F.D. SWANN	.105 A.
125	102 A. 165 229-444 F. & M. STRONG 578-966	.104 A.
124	101 A. 166	.102 A.
123	100 A. 167 369-134	.101 A.
122	098 A. 168 A. & V. WILSON 229-491 R. & I. JONES	.099 A.
121	097 A. 169 R. J. Lewis 464-868	.098 A.
120	095 A. 170	.097 A.
119	094 A. 171 BEHNT WEBBER 325-142	.095 A.
118	093 A. 172 550-1150 R. & L. R. WILLIAMS	.095 A.
117	091 A. 173 217-239 R. H. & M. E. THOMPSON	.083 A.
116	090 A. 174 232-538 C. R. Dougherty	.091 A.
115	088 A. 175 516-904 M. & M. VORZY	.090 A.
114	087 A. 176 263-48 M. & M. RICHARD	.096 A.
113	087 A. 177 M. E. & M. S. BUEBOW 558-271	.086 A.
112	087 A. 178 562-755	.086 A.
111	087 A. 179 M. B. BUSLER 572-805	.083 A.
110	084 A. 180 226-551 E. & C. HOFFMAN	.096 A.
109	083 A. 181 444-166 A. Gates	.098 A.
108	083 A. 182	.098 A.
107	083 A. 183	.098 A.
106	083 A. 184	.098 A.
105	083 A. 185	.098 A.
104	083 A. 186	.098 A.
103	083 A. 187	.098 A.
102	083 A. 188	.098 A.
101	083 A. 189	.098 A.
100	083 A. 190	.098 A.
99	083 A. 191	.098 A.
98	083 A. 192	.098 A.
97	083 A. 193	.098 A.
96	083 A. 194	.098 A.
95	083 A. 195	.098 A.
94	083 A. 196	.098 A.
93	083 A. 197	.098 A.
92	083 A. 198	.098 A.
91	083 A. 199	.098 A.
90	083 A. 200	.098 A.
89	083 A. 201	.098 A.
88	083 A. 202	.098 A.
87	083 A. 203	.098 A.
86	083 A. 204	.098 A.
85	083 A. 205	.098 A.
84	083 A. 206	.098 A.
83	083 A. 207	.098 A.
82	083 A. 208	.098 A.
81	083 A. 209	.098 A.
80	083 A. 210	.098 A.
79	083 A. 211	.098 A.
78	083 A. 212	.098 A.
77	083 A. 213	.098 A.
76	083 A. 214	.098 A.
75	083 A. 215	.098 A.
74	083 A. 216	.098 A.
73	083 A. 217	.098 A.
72	083 A. 218	.098 A.
71	083 A. 219	.098 A.
70	083 A. 220	.098 A.
69	083 A. 221	.098 A.
68	083 A. 222	.098 A.
67	083 A. 223	.098 A.
66	083 A. 224	.098 A.
65	083 A. 225	.098 A.
64	083 A. 226	.098 A.
63	083 A. 227	.098 A.
62	083 A. 228	.098 A.
61	083 A. 229	.098 A.
60	083 A. 230	.098 A.
59	083 A. 231	.098 A.
58	083 A. 232	.098 A.
57	083 A. 233	.098 A.
56	083 A. 234	.098 A.
55	083 A. 235	.098 A.
54	083 A. 236	.098 A.
53	083 A. 237	.098 A.
52	083 A. 238	.098 A.
51	083 A. 239	.098 A.
50	083 A. 240	.098 A.
49	083 A. 241	.098 A.
48	083 A. 242	.098 A.
47	083 A. 243	.098 A.
46	083 A. 244	.098 A.
45	083 A. 245	.098 A.
44	083 A. 246	.098 A.
43	083 A. 247	.098 A.
42	083 A. 248	.098 A.
41	083 A. 249	.098 A.
40	083 A. 250	.098 A.
39	083 A. 251	.098 A.
38	083 A. 252	.098 A.
37	083 A. 253	.098 A.
36	083 A. 254	.098 A.
35	083 A. 255	.098 A.
34	083 A. 256	.098 A.
33	083 A. 257	.098 A.
32	083 A. 258	.098 A.
31	083 A. 259	.098 A.

LORING AVENUE

111	083 A. 179 M. B. BUSLER 572-805	.083 A.
110	084 A. 180 226-551 E. & C. HOFFMAN	.096 A.
109	085 A. 181 444-166 A. Gates	.098 A.
108	085 A. 182	.098 A.
107	085 A. 183	.098 A.
106	085 A. 184	.098 A.
105	085 A. 185	.098 A.
104	085 A. 186	.098 A.
103	085 A. 187	.098 A.
102	085 A. 188	.098 A.
101	085 A. 189	.098 A.
100	085 A. 190	.098 A.
99	085 A. 191	.098 A.
98	085 A. 192	.098 A.
97	085 A. 193	.098 A.
96	085 A. 194	.098 A.
95	085 A. 195	.098 A.
94	085 A. 196	.098 A.
93	085 A. 197	.098 A.
92	085 A. 198	.098 A.
91	085 A. 199	.098 A.
90	085 A. 200	.098 A.
89	085 A. 201	.098 A.
88	085 A. 202	.098 A.
87	085 A. 203	.098 A.
86	085 A. 204	.098 A.
85	085 A. 205	.098 A.
84	085 A. 206	.098 A.
83	085 A. 207	.098 A.
82	085 A. 208	.098 A.
81	085 A. 209	.098 A.
80	085 A. 210	.098 A.
79	085 A. 211	.098 A.
78	085 A. 212	.098 A.
77	085 A. 213	.098 A.
76	085 A. 214	.098 A.
75	085 A. 215	.098 A.
74	085 A. 216	.098 A.
73	085 A. 217	.098 A.
72	085 A. 218	.098 A.
71	085 A. 219	.098 A.
70	085 A. 220	.098 A.
69	085 A. 221	.098 A.
68	085 A. 222	.098 A.
67	085 A. 223	.098 A.
66	085 A. 224	.098 A.
65	085 A. 225	.098 A.
64	085 A. 226	.098 A.
63	085 A. 227	.098 A.
62	085 A. 228	.098 A.
61	085 A. 229	.098 A.
60	085 A. 230	.098 A.
59	085 A. 231	.098 A.
58	085 A. 232	.098 A.
57	085 A. 233	.098 A.
56	085 A. 234	.098 A.
55	085 A. 235	.098 A.
54	085 A. 236	.098 A.
53	085 A. 237	.098 A.
52	085 A. 238	.098 A.
51	085 A. 239	.098 A.
50	085 A. 240	.098 A.

PARK

50	065A CLARK MERRIMAN 320-527	.065A
51	079A 335-215 C. A. MERRIMAN	.079A
52	079A 224-161 501-476 F. GREENE et al.	.079A
53	079A	.079A
54	079A	.079A
55	082 A. 177-582 AQUILLA LAKE COMMUNITY, INC.	.122 A.
56	116 A. 515-966 J. P. WEBER 574-877	.116 A.

AQUILLA VILLAGE VOL. 4, PAGES 26-27 REC. OF PLATS
 FORMERLY
 LAKE AQUILLA ESTATES COMPANY'S SUBDIVISION NO. 1

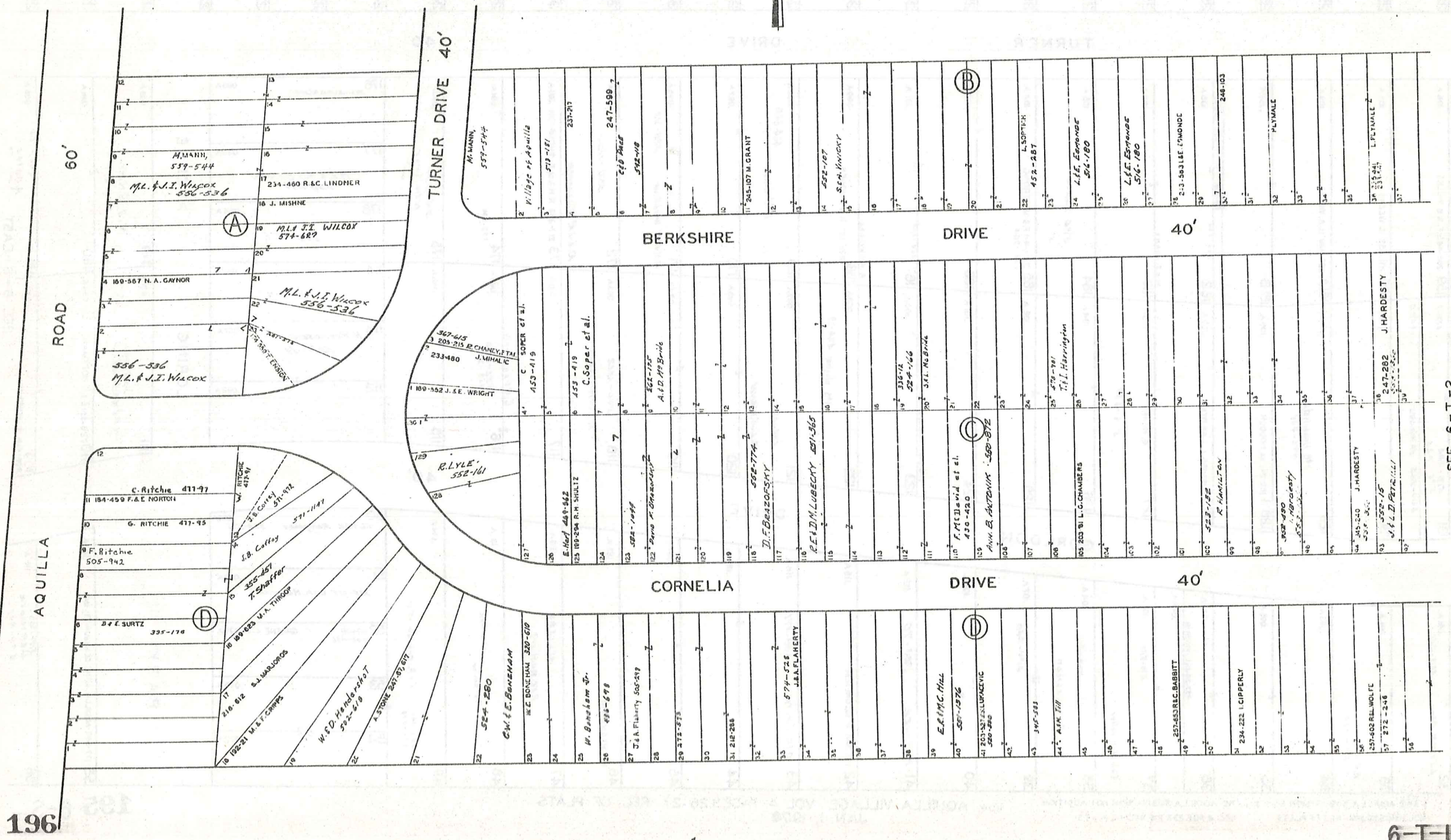
AND RESUBDIVISION OF BLOCKS I & J AND SUBLOTS
 NOS. 125 TO 141 INCLUSIVE IN BLOCK D

VOL. 2 PAGES 6, 7, 8, 9, 10, 11, 12, 19 & 33 REC. OF PLATS

SCALE 1 INCH = 40 FEET

JAN. 1, 1976

PART OF ORIGINAL LOT NOS. 9 & 10 OF THE HOLMES TRACT CLARIDON TOWNSHIP



AQUILLA VILLAGE VOL. 4, PAGES 26-27 REC. OF PLATS
FORMERLY
LAKE AQUILLA ESTATES COMPANY'S SUBDIVISION NO. 1

AND RESUBDIVISION OF BLOCKS I & J AND SUBLOTS
NOS. 125 TO 141 INCLUSIVE IN BLOCK D

VOL. 2 PAGES 6, 7, 8, 9, 10, 11, 12, 19 & 33 REC. OF PLATS

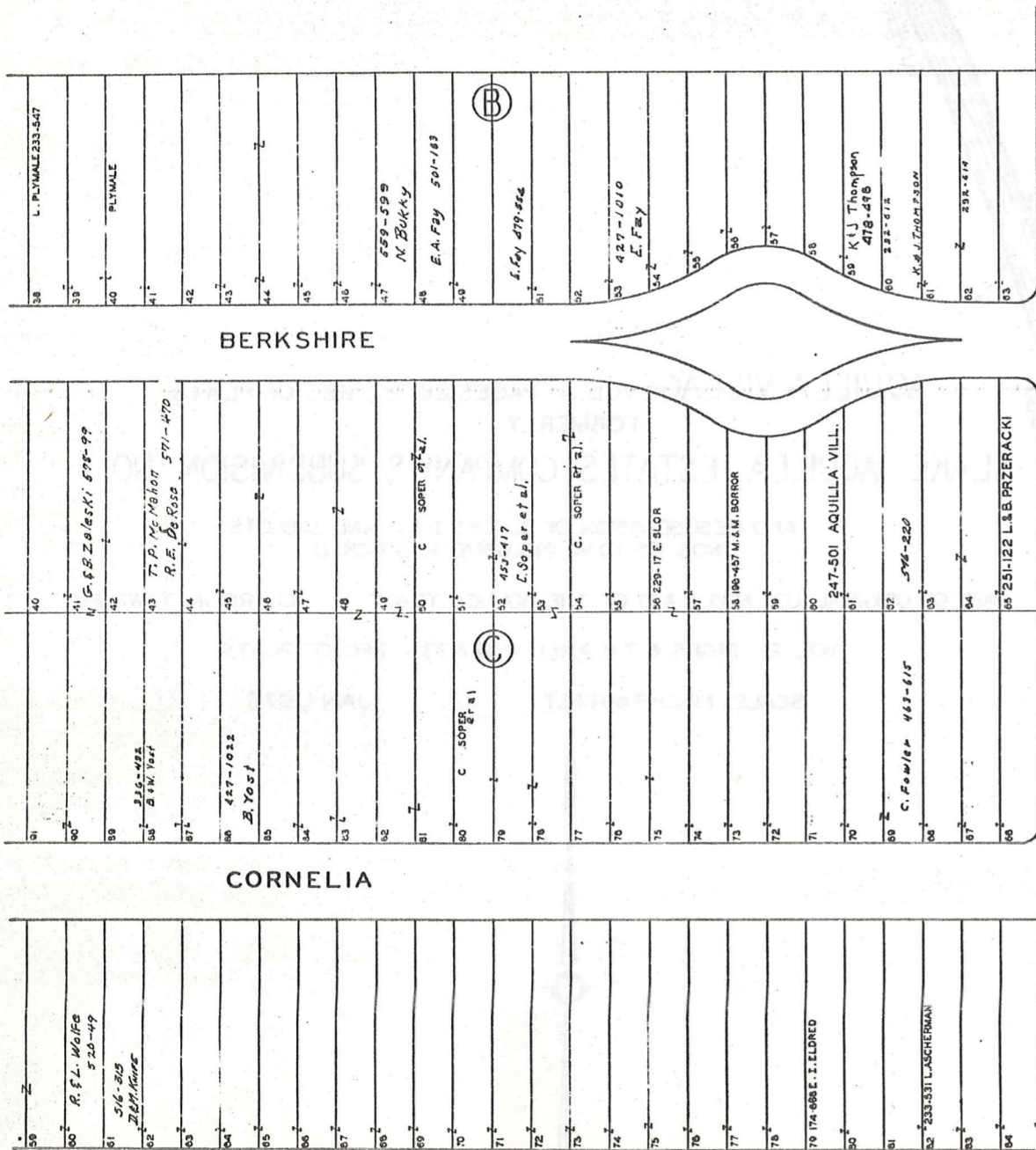
SCALE 1 INCH = 40 FEET

JAN. 1, 1976

PART OF ORIGINAL LOT NOS. 9 & 10 OF THE HOLMES TRACT

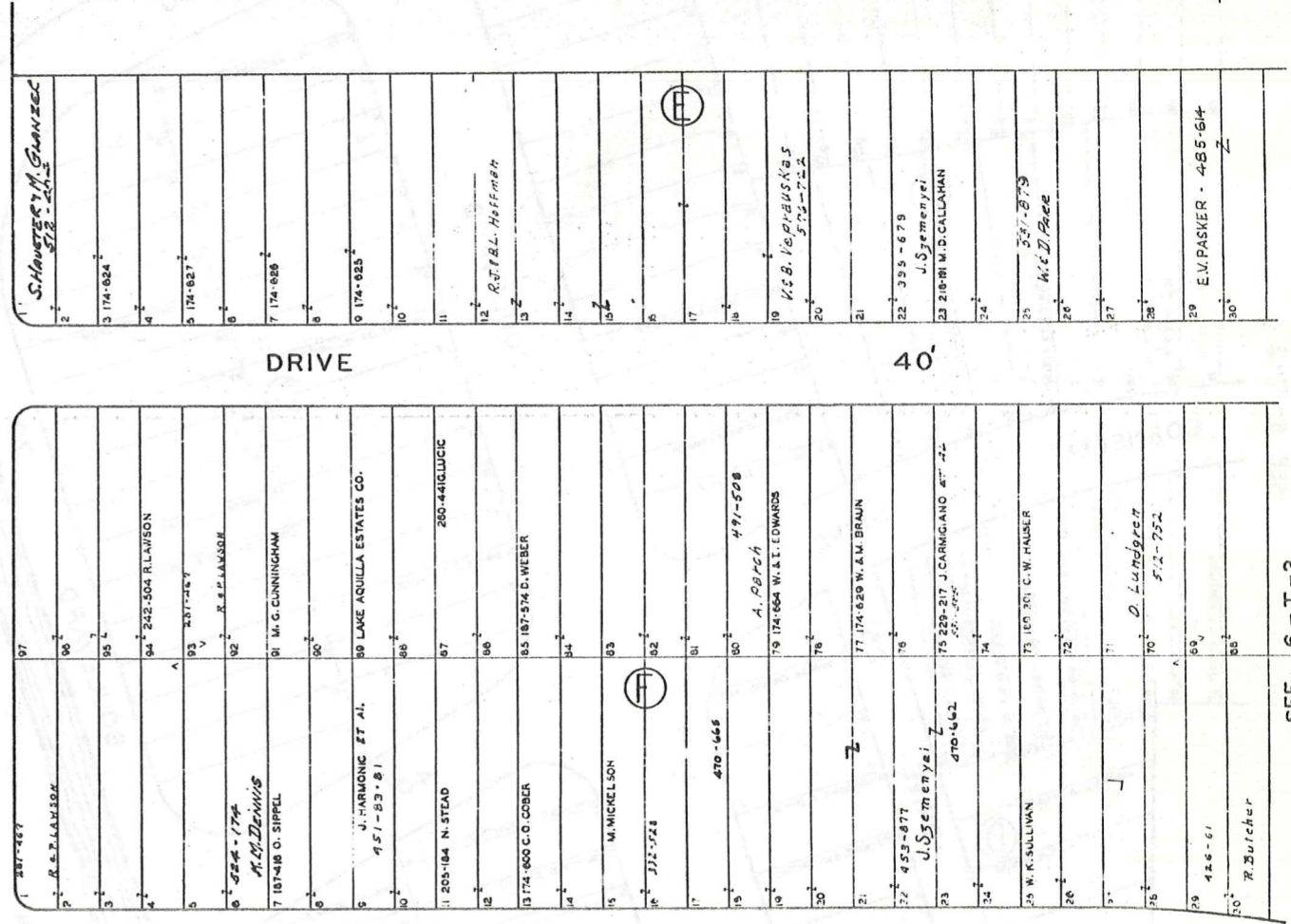
CLARIDON TOWNSHIP

SEE 6-T-1

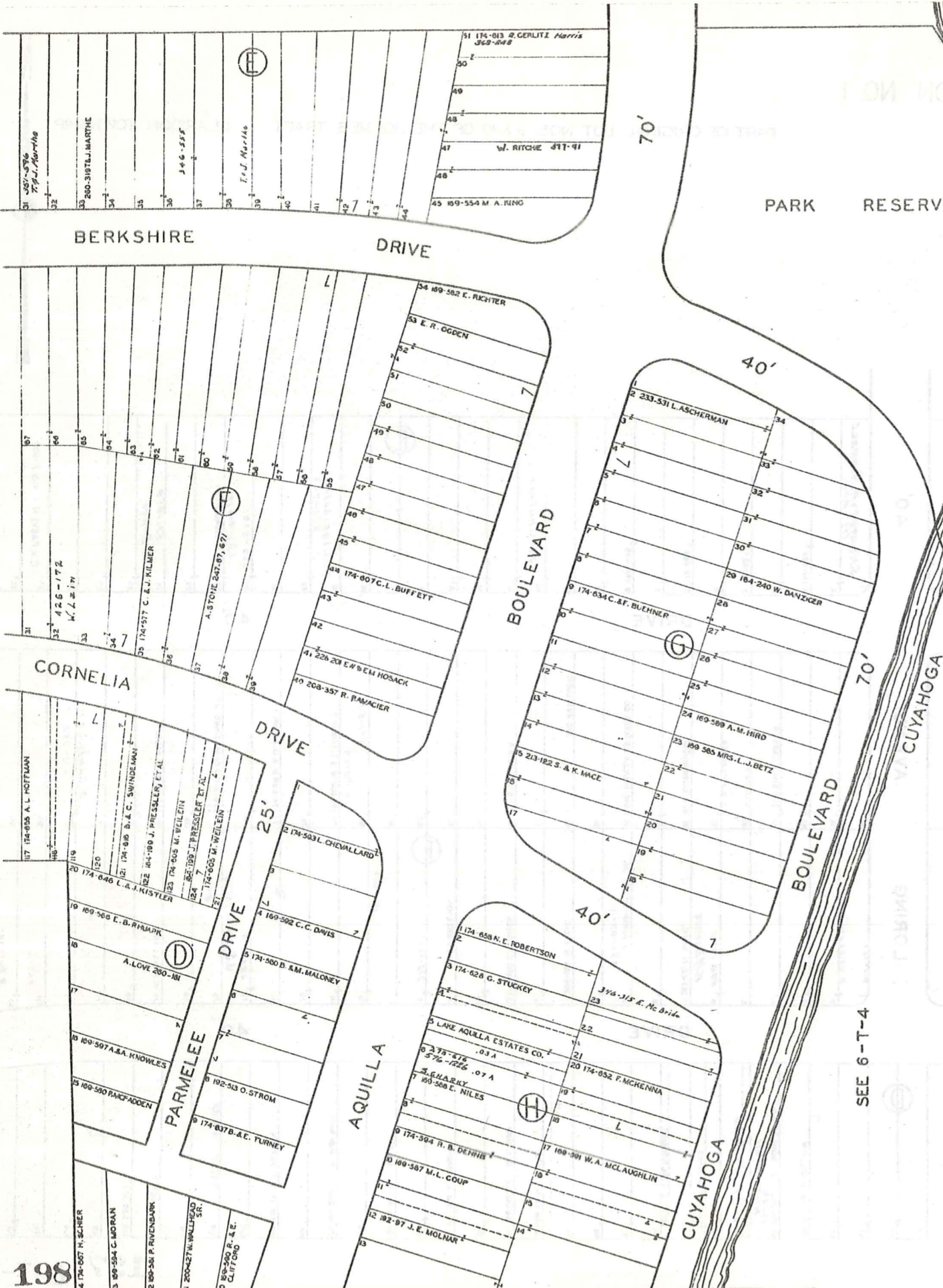


LORING AVENUE

40'



SEE 6-T-3



AQUILLA VILLAGE VOL. 4 PAGES 26-27 REC. OF PLATS
 FORMERLY
 LAKE AQUILLA ESTATES COMPANY'S SUBDIVISION NO. 1

AND RESUBDIVISION OF BLOCKS I & J AND SUBLOTS
 NOS. 125 TO 141 INCLUSIVE IN BLOCK D

PART OF ORIGINAL LOT NOS. 9 & 10 OF THE HOLMES TRACT CLARIDON TOWNSHIP

VOL. 2 PAGES 6, 7, 8, 9, 10, 11, 12, 19 & 33 REC. OF PLATS

SCALE 1 INCH = 40 FEET

JAN. 1, 1975

SEE 6-T-2

SEE 6-T-4

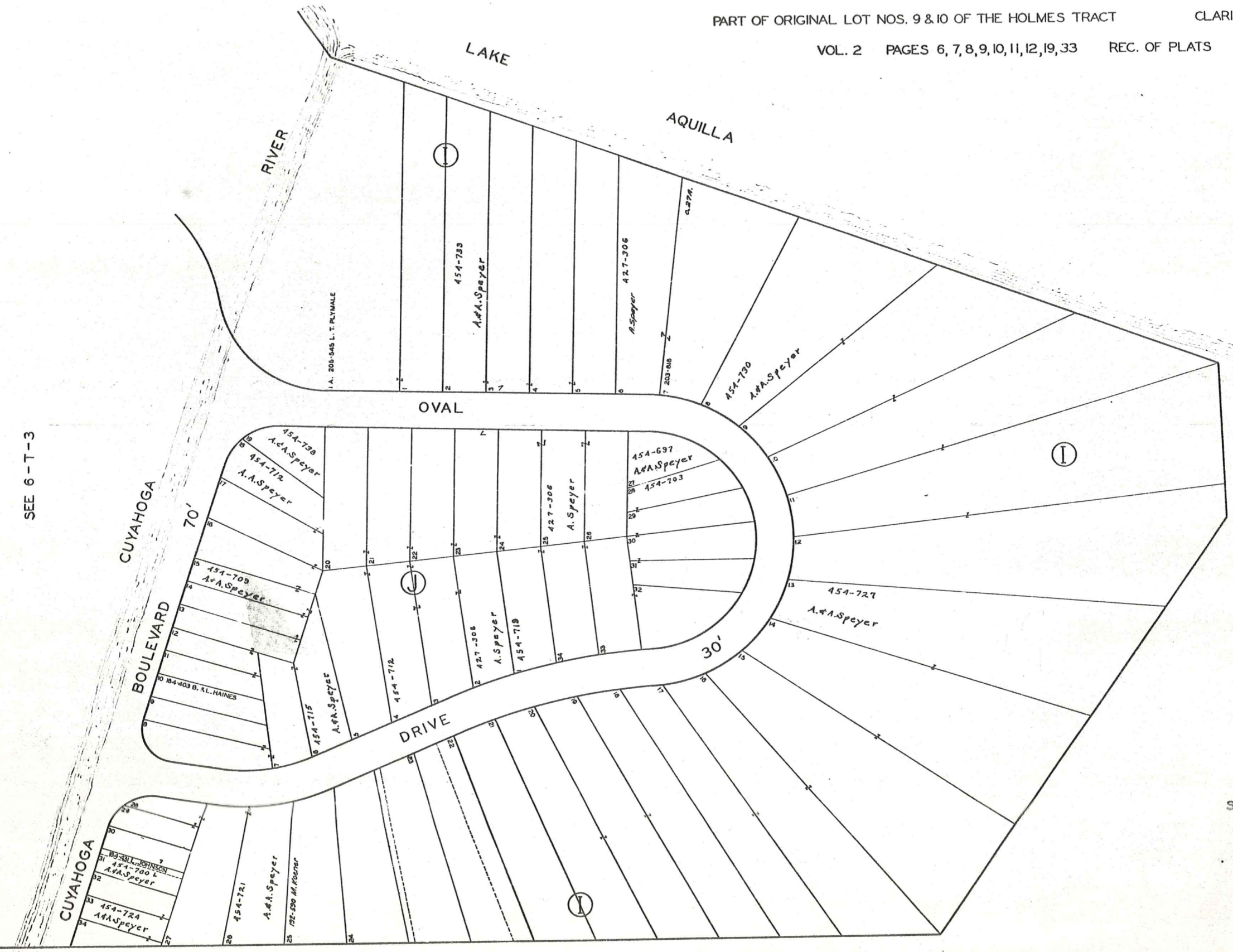
AQUILLA VILLAGE VOL. 4 PAGES 26-27 REC. OF PLATS
FORMERLY
LAKE AQUILLA ESTATES COMPANY'S SUBDIVISION NO. 1

AND RESUBDIVISION OF BLOCKS I & J AND SUBLOTS
NOS. 125 TO 141 INCLUSIVE IN BLOCK D

PART OF ORIGINAL LOT NOS. 9 & 10 OF THE HOLMES TRACT

CLARIDON TOWNSHIP

VOL. 2 PAGES 6, 7, 8, 9, 10, 11, 12, 19, 33 REC. OF PLATS

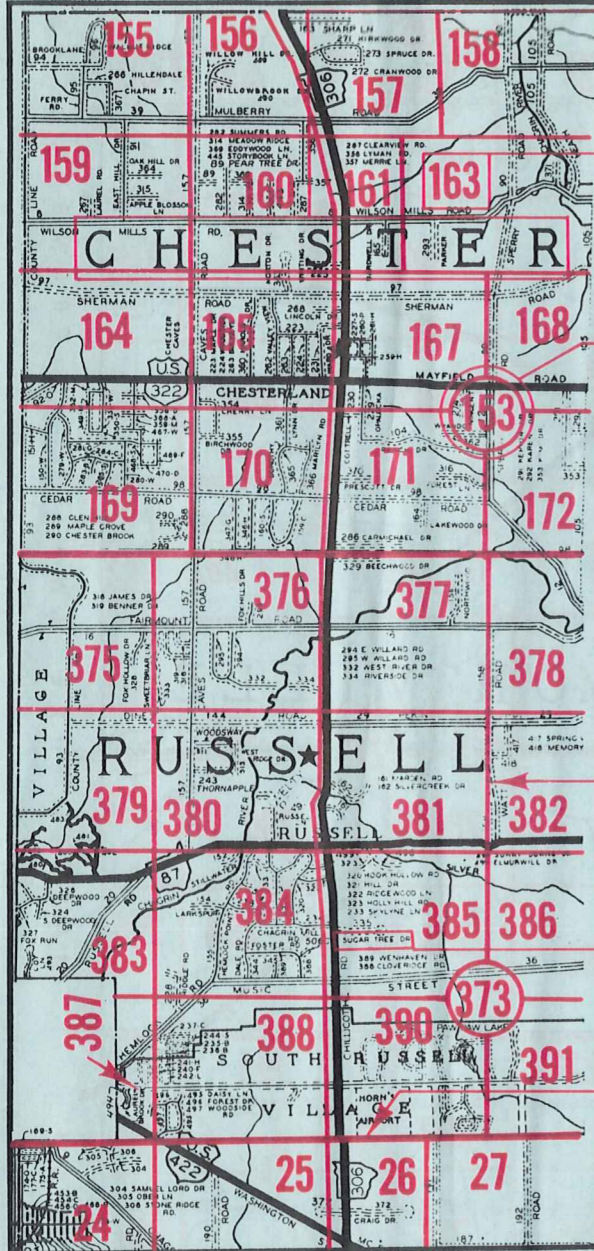


SEE 6-T-3

SCALE 1 INCH = 40 FEET
JAN. 1, 1976

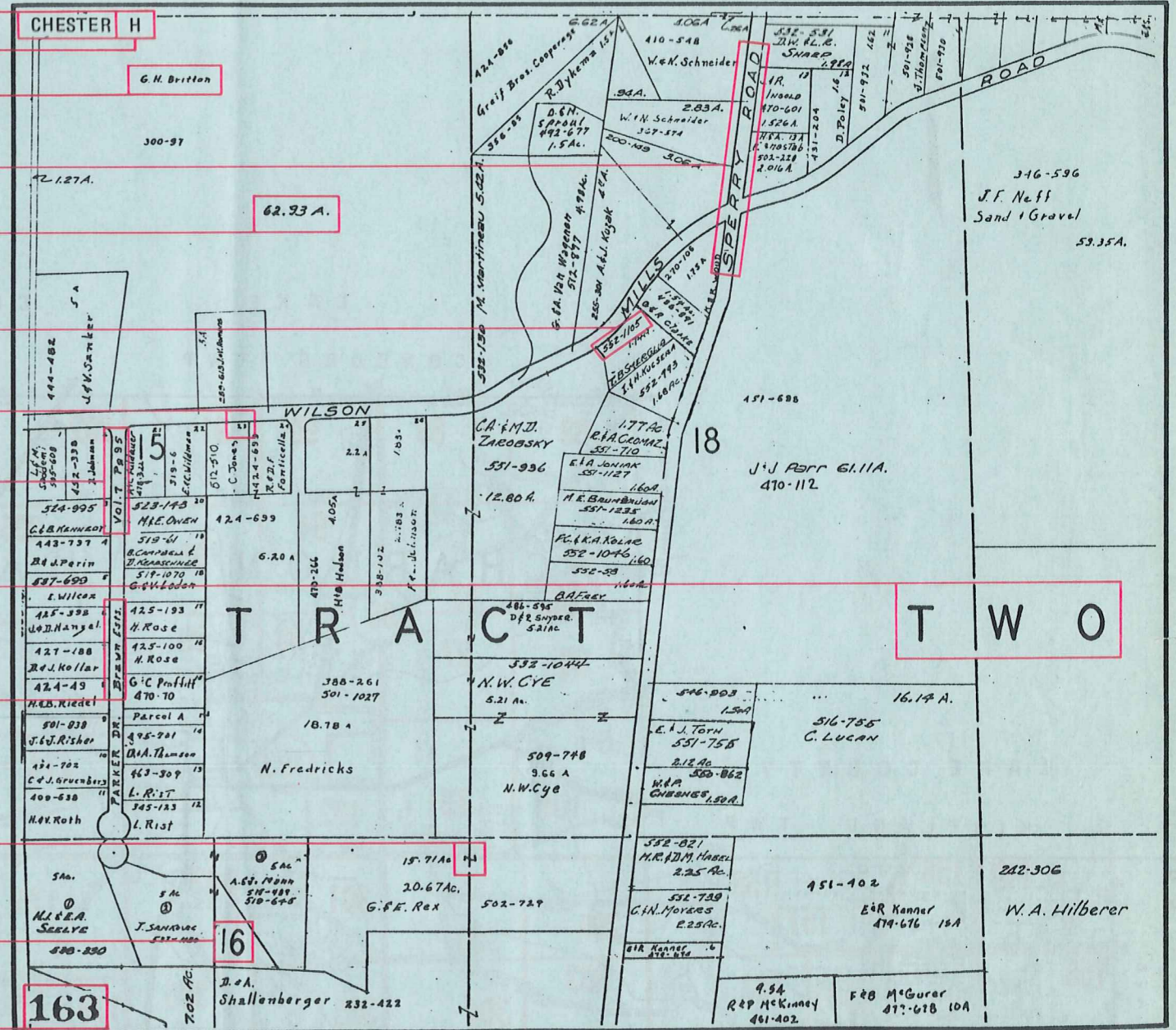
Explanation and Use Sheet for Geauga County, Ohio

SAMPLE (PARTIAL) COUNTY INDEX MAP



- Township Name
- Map Page Number (Or Letter)
- Owners Name
- Street Name
- Acreage
- Municipality Index Beginning Atlas Page Number
- Deed Book & Page
- Subdivision Lot Number
- Plat Book & Page
- Tract Number
- Atlas Page Boundary
- Subdivision Name
- Street Name
- Denotes Continuous Ownership
- Municipality Index Atlas Page Boundary
- Tract Lot Number
- Atlas Page Number

SAMPLE (PARTIAL) MAP PAGE



USE OF THE MAP VOLUME

1. LOCATE THE GENERAL AREA OF INTEREST ON THE COUNTY INDEX MAP, ATLAS PAGE 'B'.
2. A. IF PROPERTY IS IN A TOWNSHIP, NOTE THE ATLAS PAGE NUMBER. TURN TO THE PAGE INDICATED AND LOCATE SPECIFIC PARCEL OF INTEREST.
NOTE: ON SOME MAPS YOU MAY BE REFERRED TO A DETAIL SHEET SHOWING AN ENLARGEMENT OF THE AREA. THESE MAPS ARE FOUND AT THE END OF THE REGULAR MAP PAGES IN EACH TOWNSHIP EITHER IN ALPHABETICAL OR NUMERICAL SEQUENCE.
- B. IF PROPERTY IS IN A MUNICIPALITY, REFER TO THE TABLE OF CONTENTS, ATLAS PAGE 'C', AND NOTE THE BEGINNING ATLAS PAGE NUMBER FOR THE MUNICIPALITY OF INTEREST.
 - (1) TURN TO THE PAGE INDICATED. ON THIS PAGE WILL APPEAR AN INDEX MAP FOR THAT MUNICIPALITY.
 - (2) LOCATE SPECIFIC AREA OF INTEREST AND NOTE THE MAP PAGE NUMBER.
NOTE: DO NOT CONFUSE THE MAP PAGE NUMBER WITH THE ATLAS PAGE NUMBER IN THESE MUNICIPALITIES.
 - (3) FOLLOW EITHER ALPHABETICAL OR NUMERICAL SEQUENCE TO THE MAP PAGE INDICATED AND LOCATE SPECIFIC PARCEL OF INTEREST.